

» Kontron User's Guide «



MPC20/20L/21/21C

Document Revision 100

MPC20W0L/21W0L

» Table of Contents «

1	User Information	5
1.1	About this Document	5
1.2	Copyright Notice	5
1.3	Trademarks	5
1.4	Standards	5
1.5	Warranty	5
1.6	Technical Support	6
1.7	Environmental Protection Statement	6
1.8	RoHS Commitment	6
1.8.1	RoHS Compatible Product Design	7
1.8.2	RoHS Compliant Production Process	7
1.8.3	WEEE Application	7
1.9	Swiss Quality	7
1.10	The Swiss Association for Quality and Management Systems	8
1.11	Declaration of Conformity	9
1.12	EMV Certificate MPC20 / 20WOL / 21 / 21C / 21WOL	10
1.12.1	EMV Test Diagram, Class A MPC20 / 20WOL / 21 / 21C / 21WOL	11
1.12.2	EMV Test Diagram, Class B MPC20 / 20WOL / 21 / 21C / 21WOL	11
2	Overview	12
2.1	Packing List	12
2.2	System Overview	12
2.3	Differences between the MPC20, MPC21, MPC21C	13
2.4	Assembly Options for the MPC20/21	13
2.5	Functional Block Diagram	14
2.6	MICROSPACE® Documentation	14
3	Specifications	15
3.1	MPC20/20L/21/21C Incompatibilities to a Standard PC/AT	17
4	Safety Regulations	18
4.1	Safety: Power-On Indicator	18

4.2	Safety: Coded and Marked Connectors	18
4.3	Protection of the Supply Input Current	18
4.4	Safety: Wrong Polarization on the Power Input	18
4.5	Safety: Protection of the Output Currents	18
4.6	Safety: Load Dump Protection in 12V/24V systems	18
4.7	Ground Potential	19
4.8	Power On/Off Switch	19
4.9	Safety: Batteries Inside the Device	19
4.10	Protection against Over-Heating	20
4.11	Mechanical Safety: Safe Assembly and Mounting	20
4.12	Environmental Safety: At 25°C No "Hot" Surfaces	20
4.13	Environmental Safety: No Release of Toxins	20
4.14	Environmental Safety: Laser Devices	20
4.15	Environmental Safety: Noise Emission	20
4.16	Environmental Safety: Hazardous Environs	21
4.17	Environmental Safety: Humidity and Water Spray	21
4.18	Safety: Independent Software	21
4.19	Safety: Recycling the Computer System	21
4.20	Safety: Static Electricity	21
4.21	Safety: Operator Security	21
5	Functions	22
5.1	Connectors	22
5.1.1	Front of the MPC20 / 20L	22
5.1.2	Rear of the MPC20 / 20L	23
5.1.3	Front of the MPC21/21C	24
5.1.4	Rear of the MPC21	25
5.1.5	Rear of the MPC21C	26
5.1.6	Power Supply Connector	26
5.2	DC-Power Input Specifications	27
5.2.1	Nominal DC-Power Input Voltage	27
5.2.2	Minimal DC-Power Input Voltage Specification	27
5.2.3	IT-Power System	27
5.3	Hard Disk 2.5" - Standard Type	27
5.4	WLAN Option	28

6	Hardware Installation.....	29
6.1	Install an additional PCI/104 card (MPC21/21C only)	29
7	Prepare the Computer System.....	30
7.1	Print Manuals from the Product CD	30
7.2	Jumper Configuration	30
7.3	Connect the Peripherals to the System	31
8	Power On the System	32
8.1	BIOS Setup	33
8.2	Boot Up the Operating System and Install the Drivers.....	33
8.3	FreeDOS, DSLinux und ELinOS Bootflash	33
8.3.1	Free DOS	33
8.3.2	SLAX LINUX.....	33
8.3.3	ELinOS Demo.....	33
9	Dimensions and Diagrams	34
9.1	Front Views	34
9.2	Rear Views	35
9.3	Top Views	36
9.4	Side Views	37
9.5	Front Plate MPC21/21C.....	38
9.6	Mounting Plate MPC20/20L/21/21C	39
9.7	Wall Mounting Kit.....	40
10	Core BIOS	41
10.1	BIOS History	41
10.2	Setup Menu Screens and Navigation	41
10.3	BIOS Setup	42
10.3.1	Main Menu.....	42
11	Boot from LAN – PXE & WOL (Wake On LAN)	43
11.1	MPC20WOL and MPC21WOL	43
11.1.1	Boot from LAN (PXE).....	43
11.1.2	PXE Boot and PXE Protocol	43
11.1.3	Wake On LAN (WOL)	45

11.2 MPC20/20L/21/21C..... 47
11.2.1 Boot from LAN (PXE)..... 47
11.2.2 PXE License Order Form (for MPC20 / MPC20L / MPC21 / MPC21C) 49

12 Appendix A: Document Revision History52

13 Index.....53

1 User Information

1.1 About this Document

This document provides information about products from Kontron AG and/or its subsidiaries. No warranty of suitability, purpose, or fitness is implied. While every attempt has been made to ensure that the information in this document is accurate, the information contained within is supplied "as-is" and is subject to change without notice.

For the circuits, descriptions and tables indicated, Kontron assumes no responsibility as far as patents or other rights of third parties are concerned.

1.2 Copyright Notice

Copyright© 2003-2011 Kontron AG

All rights reserved. No part of this document may be reproduced, transmitted, transcribed, stored in a retrieval system, or translated into any language or computer language, in any form or by any means (electronic, mechanical, photocopying, recording, or otherwise), without the express written permission of Kontron AG.

1.3 Trademarks

MICROSPACE®, smartModule®, smartCore®Express and DIGITAL-LOGIC® are trademarks or registered trademarks of Kontron Compact Computers AG. Kontron is a trademark or registered trademark of Kontron AG.

The following lists the trademarks of components used in this product.

- » IBM, XT, AT, PS/2 and Personal System/2 are trademarks of International Business Machines Corp.
- » Microsoft is a registered trademark of Microsoft Corp.
- » Intel is a registered trademark of Intel Corp.

All other products and trademarks mentioned in this manual are trademarks of their respective owners.

1.4 Standards

Kontron AG is certified to ISO 9000 standards.

1.5 Warranty

This Kontron AG product is warranted against defects in material and workmanship for the warranty period from the date of shipment. During the warranty period, Kontron AG will, at its discretion, decide to repair or replace defective products.

Within the warranty period, the repair of products is free of charge as long as warranty conditions are observed.

The warranty does not apply to defects resulting from improper or inadequate maintenance or handling by the buyer, unauthorized modification or misuse, operation outside of the product's environmental specifications or improper installation or maintenance.

Kontron AG will not be responsible for any defects or damages to other products not supplied by Kontron AG that are caused by a faulty Kontron AG product.

1.6 Technical Support

Technicians and engineers from Kontron AG and/or its subsidiaries are available for technical support. We are committed to making our products easy to use and will help you use our products in your systems.

For technical support, please consult our technical support department:

Web: <http://support.kcc-ag.ch>
Tel.: +41 (0) 32 681-5848
Fax: +41 (0) 32 681-5801

For the latest product documentation, utilities, drivers, additional tools and software please consult our website:

Web: <http://kontron.com>

1.7 Environmental Protection Statement

This product has been manufactured to satisfy environmental protection requirements wherever possible. Many of the components used (structural parts, printed circuit boards, connectors, batteries, etc.) are capable of being recycled. Final disposal of this product after its service life must be accomplished in accordance with applicable country, state, or local laws or regulations. All components within this product fulfill the requirements of the RoHS (Restriction of Hazardous Substances Directive). The product is soldered with a lead free process.

1.8 RoHS Commitment

Kontron Compact Computers AG (Switzerland) is committed to develop and produce environmentally friendly products according to the Restriction of Hazardous Substances (RoHS) Directive (2002/95/EC) and the Waste Electrical and Electronic Equipment (WEEE) Directive (2002/96/EC) established by the European Union. The RoHS directive was adopted in February 2003 by the European Union and came into effect on July 1, 2006. It is not a law but a directive, which restricts the use of six hazardous materials in the manufacturing of various types of electronic and electrical equipment. It is closely linked with the Waste Electrical and Electronic Equipment Directive (WEEE) 2002/96/EC, which has set targets for collection, recycling and recovery of electrical goods and is part of a legislative initiative to solve the problem of huge amounts of toxic e-waste.

Each European Union member state is adopting its own enforcement and implementation policies using the directive as a guide. Therefore, there could be as many different versions of the law as there are states in the EU. Additionally, non-EU countries like China, Japan, or states in the U.S. such as California may have their own regulations for green products, which are similar, but not identical, to the RoHS directive.

RoHS is often referred to as the "lead-free" directive but it restricts the use of the following substances:

- » Lead
- » Mercury
- » Cadmium
- » Chromium VI
- » PBB and PBDE

The maximum allowable concentration of any of the above mentioned substances is 0.1% (except for Cadmium, which is limited to 0.01%) by weight of homogeneous material. This means that the limits do not apply to the weight of the finished product, or even to a component but to any single substance that could (theoretically) be separated mechanically.

1.8.1 RoHS Compatible Product Design

All standard products from Kontron Compact Computers (KCC) comply with RoHS legislation.

Since July 1, 2006, there has been a strict adherence to the use of RoHS compliant electronic and mechanical components during the design-in phase of all KCC standard products.

1.8.2 RoHS Compliant Production Process

KCC selects external suppliers that are capable of producing RoHS compliant devices verified by:

- » A confirmation from the supplier indicating that their production processes and resulting devices are RoHS compliant.
- » If there is any doubt of the RoHS compliancy, the concentration of the previously mentioned substances in a produced device will be measured. These measurements are carried out by an accredited laboratory.

1.8.3 WEEE Application

The WEEE directive is closely related to the RoHS directive and applies to the following devices:

- » Large and small household appliances
- » IT equipment
- » Telecommunications equipment (although infrastructure equipment is exempt in some countries)
- » Consumer equipment
- » Lighting equipment – including light bulbs
- » Electronic and electrical tools
- » Toys, leisure and sports equipment
- » Automatic dispensers

It does not apply to fixed industrial plants and tools. The compliance is the responsibility of the company that brings the product to market, as defined in the directive. Components and sub-assemblies are not subject to product compliance. In other words, since Kontron Compact Computers AG does not deliver ready-made products to end users the WEEE directive is not applicable for KCC. Users are nevertheless encouraged to properly recycle all electronic products that have reached the end of their life cycle.

1.9 Swiss Quality

- » 100% Made in Switzerland
- » This product was not manufactured by employees earning piecework wages
- » This product was manufactured in humane work conditions
- » All employees who worked on this product are paid customary Swiss market wages and are insured
- » ISO 9000:2001 (quality management system)

1.10 The Swiss Association for Quality and Management Systems

The Swiss Association for Quality and Management Systems (SQS) provides certification and assessment services for all types of industries and services. SQS certificates are accepted worldwide thanks to accreditation by the Swiss Accreditation Service (SAS), active membership in the International Certification Network, IQNet, and co-operation contracts/agreements with accredited partners.

www.sqs.ch

The SQS Certificate ISO 9001:2000 has been issued to Kontron Compact Computers AG in the field of development, manufacturing and sales of embedded computer boards, embedded computer modules and computer systems. The certification is valid for three years at which time an audit is performed for recertification.

1.11 Declaration of Conformity



Declaration of Conformity

The product/device described below

Type of Equipment: Industrial Computer
Model: MPC20
MPC21
MPC21A
MPC21C

complies to the European Council Directive on the approximation of the Laws of the member states relating to electromagnetic compatibility (2004/108/EC) and Low Voltage Directive (2006/95/EC) or the last Status thereof.

Following Standards are constitute part of the declaration:

EN 60950-1:2006
EN 55022:2006-09 + A1:2007-10 Class B
EN 55024:1988-09 + A1:2001-10 + A2:2003-10
EN 61000-4-2:1995 + A1:1998 + A2:2001
EN 61000-4-3:2006 + A1:2008
EN 61000-4-4:2005
EN 61000-4-5:1995 + A1:2001
EN 61000-4-6:2003
EN 61000-4-11:2005

The responsible party declares in the name of the producer that the equipment specified above conforms to the referenced rules, regulations and Standards.

Luterbach, 18.01.2011

Mr. P. Péquignot
CEO & Director of Quality Management

Signature: 

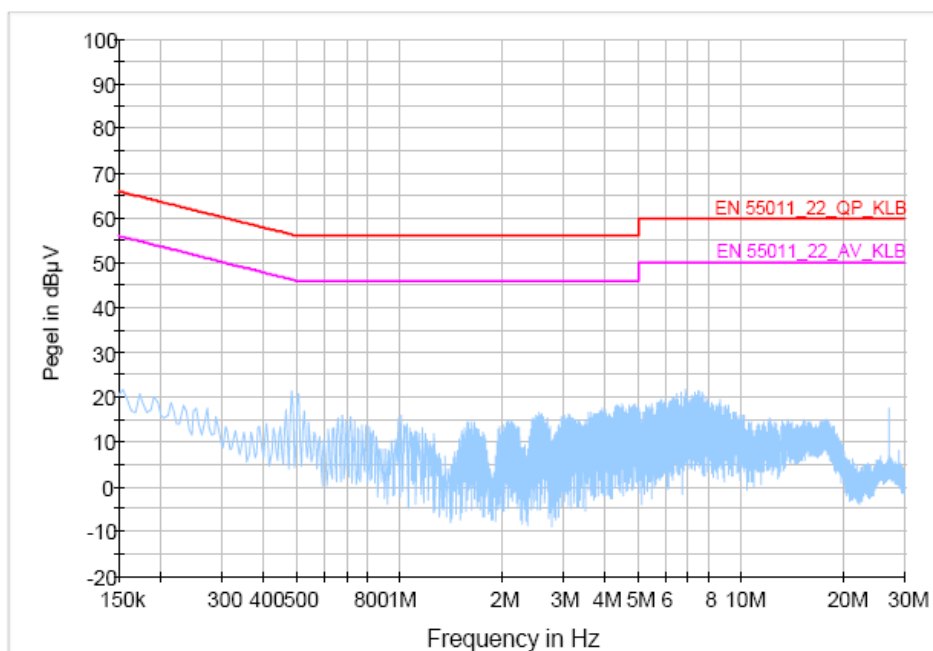
Kontron Compact Computers AG
Nonstrasse 11F
4542 Luterbach, Switzerland
Phone +41 (0)32 861 5900 - Fax +41 (0)32 861 5807 - www.kontron.com

1.12 EMV Certificate MPC20 / 20WOL / 21 / 21C / 21WOL

Berichts-Nr.: 08.015	Datum: 2. 4. 2008	EMV-Testcenter		RUAG Aerospace Defence Technology				
Version: 01	Seite: 4 von 30							
1 Durchgeführte Prüfungen und Ergebnisse								
Basisnorm	Anschlüsse (Schnittstellen)		Offerierte bzw. vereinbarte Prüfungen u. Grenzwerte					Resultate
	Typ	N	FW	FI	P	Spez.	I	
<i>Störfestigkeit</i>								
61000-4-2, ESD	Gehäuse			X				erfüllt
61000-4-3, HF-Feld	Gehäuse			X				erfüllt
61000-4-4, „Burst“	AC/DC	1		X				erfüllt
	Signal	9		X				erfüllt
61000-4-5, „Surge“	AC/DC	1		X				erfüllt
	Signal							
61000-4-6, HF auf Kabel	AC/DC	1		X				erfüllt
	Signal	7		X				erfüllt
61000-4-11, Sp'gs' einbr.	AC	1		X				erfüllt
<i>Störaussendung</i>								
61000-3-2, Oberschwing.	AC							
61000-3-3, „Flicker“	AC							
55022 / 55011, Strahl'g	Gehäuse	1	X					erfüllt
55022 / 55011, HF Leitg.	AC	1	X					erfüllt
Legende								
N	Anzahl Schnittstellen, vorgesehen für die praktische Prüfung							
FW	Fachgrundnorm, Wohnbereich, Geschäfts- und Gewerbebereiche sowie Kleinbetriebe (EN 61000-6-1:2001, EN 61000-6-3:2001)							
FI	Fachgrundnorm, Industriebereich (EN 61000-6-2:2005, EN 61000-6-4:2001)							
P	Produkt(familien)norm:							
Spez.	Spezialgrenzwerte							
Anmerkung: Für die Störaussendung bzw. Störfestigkeit wurden jeweils die schärferen der beiden Grenzwerte für den Wohn- bzw. Industriebereich herangezogen. Mitgeltende Unterlagen: EN 55024								
Dieser Bericht darf nicht ohne schriftliche Genehmigung des EMV-Testcenters STS 470 aus- zugsweise vervielfältigt werden.								
● RUAG Land Systems, CH-Thun								

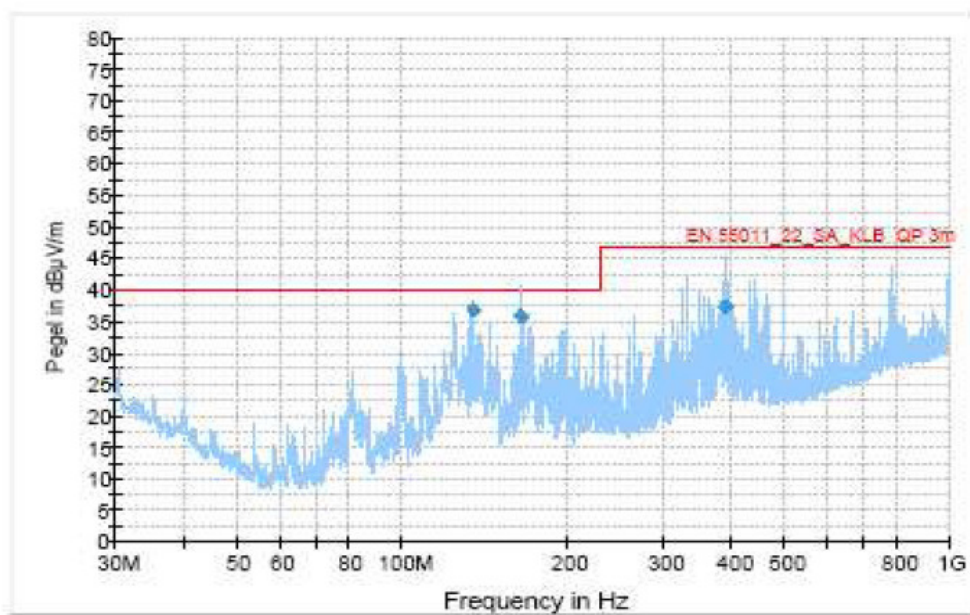
1.12.1 EMV Test Diagram, Class A MPC20 / 20WOL / 21 / 21C / 21WOL

EN 55011_22_LA_KLB LISN PMM_L1+N



1.12.2 EMV Test Diagram, Class B MPC20 / 20WOL / 21 / 21C / 21WOL

EN 55011 22 SA KLB ESS 90° 3m



2 Overview

2.1 Packing List

After opening the box, check that the following items from the packing list are included:

- » MICROSPACE-PC20/21-x
- » Technical User Manual
- » CD with drivers and documentation

2.2 System Overview

The MICROSPACE-PC20/21 is a miniaturized PC system incorporating the major elements of a PC/AT compatible computer. It includes standard PC/AT compatible elements, such as:

- » AMD Geode LX800 with 500MHz clock
- » 128k L2 Cache
- » DDR-RAM Memory 256-1024MByte (SODIMM200)
 - » MPC20L: only 256MB
- » Option: hard disk: 40GByte
- » CompactFlash Type II socket
- » Direct-X compatible video controller XVGA with up to 16MByte video memory
- » VGA video
- » USB controller with up to 4 channels (3x external – 1x internal [not assembled])
- » Audio stereo Mic in and stereo line out
- » 10-30V DC supply input
- » Fan-less low power system
- » MINI-PCI socket
- » First and second LAN: Intel82551ER 100/10Base-T
 - » MPC20L: only 1 LAN
- » Boot from LAN (PXE)
- » PS/2 keyboard/mouse support
 - » MPC20L: no PS/2
- » 256M CompactFlash boot medium with SLAX LINUX and Free DOS
 - » MPC20L: not available

Additional functions of the MPC21 models:

- » COM1 and LPT
- » PCI/104 expansion (1 slot)
- » Video input

Additional functions of the MPC21C:

- » COM1 and COM2 (no LPT)
- » PCI/104 expansion (1 slot)
- » Video input

Additional functions of the MPC20WOL and MPC21WOL:

- » First LAN chip: Intel82551QM with boot from LAN-PXE and WOL (Wake On LAN)

2.3 Differences between the MPC20, MPC21, MPC21C

Option	MPC20	MPC20L	MPC21	MPC21C
Video Input			Yes	Yes
COM1			Yes	Yes
COM2	Internal		Internal	Yes
LPT1			Yes	-
PCI/104 Expansion			1 slot	1 slot

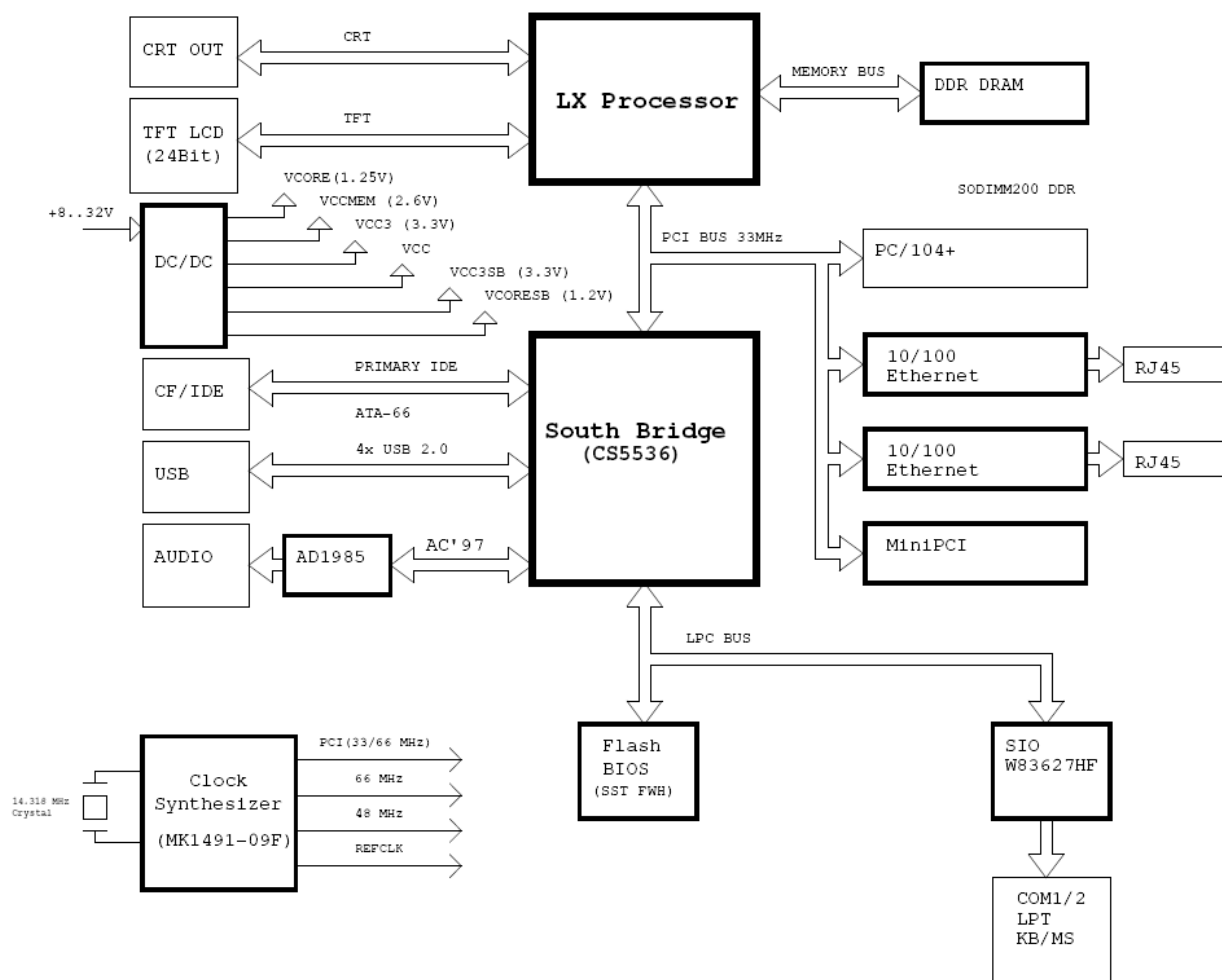
2.4 Assembly Options for the MPC20/21

The product has different assembly options. Ask the manufacturer/distributor for detailed information about the options and combination of options currently available.

Option	Part No.		Comments
Hard disk drive 40GB	807460	0	Option
Hard disk drive 40GB ext.	807462	0	Optional hard drive with extended temperature range -25°C to +70°C
Power supply adapter	812029	0	60Watt power supply
Wireless LAN	812028	0	Mini-PCI WLAN module
WOL (Wake On LAN)		U	WOL upgrade for the MPC20
WOL (Wake On LAN)		U	WOL upgrade for the MPC21

U = Upgrade, D = Downgrade, O = Option

2.5 Functional Block Diagram



2.6 MICROSPACE® Documentation

This manual is written for the end user / system integrator who plans to install computer systems based on the MICROSPACE-PC. It is for integrators and programmers of systems based on the MICROSPACE-Computer family. This manual describes the system and setup requirements; it provides instructions for installing and configuring the system. This document contains information on hardware requirements, interconnections, and details of how to program the system. Please check the Product CD for further information and manuals.

3 Specifications

Note: All information is subject to change without notice.

CPU	Specifications
MPC20/21	AMD GEODE LX800
Compatibility	80x86 CPU
1st Level Cache	16k data and 16k code
2nd Level Cache	128kByte
Socket	Soldered directly
Clock	500MHz
Performance	500MHz
FSB (GEODE)	33MHz
FPU	Integrated

Chipset	Specifications
Northbridge	AMD GEODE LX800
Southbridge	AMD CS5536
LAN 100Mbit	Intel 82551QM
LAN 100Mbit	Intel 82551ER
Audio	Integrated AC97
Firewire IEEE1394	-
Video	AMD GEODE
Frame Grabber / Video Input	Digital video input 16bit

Memory	Specifications
Main Memory	DDR-SDRAM, 64bit, up to 1024MByte in DDR-SODIMM200 socket
Flash BIOS	256kByte Flash
Setup EEPROM	2kByte for CMOS backup in battery-less applications
Flash Video BIOS	Serial flash
Video RAM	16MByte

Video Controller	Specifications
Controller	GEODE internal video controller
Video Memory	2-16MByte
Channel 1	CRT VGA 320x240 up to 1920x1440 pixels
Boot-up Resolution	640x480 / 800x600 / 1024x768 selectable
2D Graphics	Integrated accelerator

External Interfaces	Specifications
Video Interfaces	CRT1
TV Interfaces	None
USB 2.0	2 front, 2 rear, 1 internal (not assembled)
IEEE1394	None
LPT1	Only MPC21
COM1	Only MPC21: RS232
COM2	Internal: RS232 (MPC21C D-Sub9)
Keyboard	PS/2
Mouse	PS/2
Audio	Stereo I/O

Power Management	Specifications
Available since V2.0	<p>The LX800 supports ACPI and APM Version 1.2. The following ACPI Sleep States are supported:</p> <ul style="list-style-type: none"> » S1 Sleep with CPU content. » S4 Hibernation (LED★ is blinking) with transition to S5. » S5-G2 Power Off (LED★ is blinking). The device can be switched on by the Main Button (or with WOL if available). » S5-G3 Power Off (mechanically) <p>★ = if available</p>

Power Supply	Specifications
Input	Nom. 12V / 24VDC (range 10V to 32VDC)
Protection	Load dump resistant, wrong polarity resistant, EMI filtered
Specification	MIL-STD-1275 compliant
Insulation	The power supply must have double or reinforced insulation!
Running	Typical
Running with HDD	Typical
Running WOL	Typical
Running WOL with HDD	Typical
Power-off Standby	Typical
Power-off Standby WOL	Typical

Power Consumption @ 19V				
Description				
	MPC20		MPC20WOL	
	w/ HDD	w/o HDD	w/ HDD	w/o HDD
Power ON (BIOS setup)	368mA	344mA	393mA	372mA
Power OFF (green LED is blinking)	30mA	30mA	57mA	57mA
Power OFF (LAN cable is connected - LINK LED glows)			66mA	66mA
	MPC21		MPC21WOL	
	w/ HDD	w/o HDD	w/ HDD	w/o HDD
Power ON (BIOS setup)	456mA	433mA	420mA	397mA
Power OFF (green LED is blinking)	45mA	45mA	57mA	57mA
Power OFF (LAN cable is connected - LINK LED glows)			67mA	67mA

Physical Characteristics	Specifications
Dimensions	Length: 165mm Depth: 110mm Height: MPC20 27mm MPC21x 46mm
Weight	MPC20 0.5kg MPC21x 0.7kg

Operating Temperature	Specifications
Without Hard Drive	-25°C to +70°C
With Standard Hard Drive	0°C to +50°C
With Extended Temperature Hard Drive	-25°C to +70°C

Operating Environment	Specifications
Relative Humidity	5-90% non-condensing IEC68-2-30 at -+5 to +50°C operating
Vibration, operating	IEC68-2-6 10-50Hz, 0.075mm and 55-500Hz, 1.0G
Vibration, non-operating	IEC68-2-6 10-50Hz, 0.15mm and 55-500Hz, 2.0G
Shock, operating	IEC68-2-27 10G, 11ms ½ sine
Shock, non-operating	IEC68-2-27 50G, 11ms, ½ sine
Altitude	IEC68-2-13 4571meter operating

Security	
e1	Not planned
UL	Not planned
ETL 301	Not planned
SEV	
Safety	AR385-16

EMI / EMC Tests	Specifications
EMC Emission EN61000-6-2:2001	
Conducted disturbance	EN55022 Class B
Radiated disturbance	EN55022 Class B
EMC Immunity EN61000-6-2	
Electro-Static Discharge (ESD)	EN61000-4-2 Voltage = 4kV contact / 8kV air Criteria A
Radiated RF Field	EN61000-4-3 Level = 10V/m Criteria A
Electrical Fast Transients (burst)	EN61000-4-4 Grade 2: DC-Power lines = 1000V (5/50ns) Grade 2: AC-Power lines = 2000V (5/50ns) Grade 2: Signal lines = 500V (5/50ns) Criteria B
Surge	EN61000-4-5 Grade 2: DC-Power lines = 1kV, (1.2/50us) Grade 2: AC-Power lines = 2kV, (1.2/50us) Criteria B
Conducted Disturbances	EN61000-4-6 Voltage = 10V coupled by case Criteria A

Note: All information is subject to change without notice.

3.1 MPC20/20L/21/21C Incompatibilities to a Standard PC/AT

Keyboard versus NUM-Lock

Without a connected keyboard, the NUM-Lock ON field in the BIOS-setup **must not be** activated. Otherwise the time-out noticeably slows down the reaction speed of the computer as soon as the keyboard is not connected. **The PS2 peripherals (KB and MS) are not hot-plug compatible.**

4 Safety Regulations

Safety verifications follow the guidelines adapted from the US Army Communication and Electronics Command Supplement (1992 version) 1 to AR385-16.

4.1 Safety: Power-On Indicator

The green power indicator is located in the front of the computer system. [MIL-STD-1472D]

4.2 Safety: Coded and Marked Connectors

All connectors (plugs and receptacles) are coded and marked to prevent insertion of the wrong plug into a receptacle or other mating unit [MIL-STD-1472D]. Depending on the mounted replicator unit, the connectors are PC-Style, DSUB or MIL versions. The male connectors are de-energized when disconnected. [MIL-STD-454M]

4.3 Protection of the Supply Input Current

Note: The computer system has no internal fuse. To protect the supply input from overcurrent, an external fuse or a current-limited power supply should be used.

4.4 Safety: Wrong Polarization on the Power Input

Attention: The supply input is protected against wrong polarization with a serial diode. This diode withstands voltage up to 28Volts.

4.5 Safety: Protection of the Output Currents

There is no overcurrent protection on any peripheral port. The following table shows the maximum available current at each peripheral connector:

Connector	Nominal maximum current
USB	0.5 Amp. @ 5V
KB/MS	0.1 Amp. @ 5V
VGA	0.1 Amp. @ 5V

4.6 Safety: Load Dump Protection in 12V/24V systems

Danger: There is no integrated protection against load dump!

If the computer system is to be installed in a vehicle (car, truck, train), an external, overvoltage protection must be attached. Connecting a zinc oxide based metal oxide varistor (MOV) directly at the supply input connector is recommended. Use a typical 28V clamp voltage for the 12/24V systems.

Example: Varistor: B72220S300K (Infineon) Vbreak=30V

4.7 Ground Potential

The shields of all interface connectors are grounded to the chassis. The user then has the option to ground the system with a ground wire.



Pin	Left	Middle	Right	
Signal	GND	Chassis ground	Power 10-30V	Chassis ground

4.8 Power On/Off Switch

The power switch is clearly identified and located on the front panel. [MIL-STD-545M]

The power on/off switch does **not** cut all electricity to the system. In the "off" position, a microcontroller is still working, to supervise wakeup events (switch, Wake on LAN). [MIL STD 454M] In this state, the system is consuming approximately 300mW.

To turn on the system, the power switch must be pressed for at least one second. While running, the system can be forced to shut off by pressing the on/off switch for 4 seconds.

To completely power off the system, all power must be disconnected from the device by either removing the cords from the device or from the power sources. All connectors must always be easily accessible.

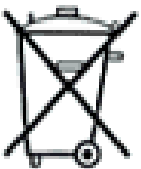
Be sure to disconnect the power supply before opening the system.

4.9 Safety: Batteries Inside the Device

Caution: Electric Shock!

The system has an integrated backup lithium battery (RTC). The battery compartment is not vented. The system casing protects the operator from a possible exploding battery cell.

The lithium battery can only be replaced by the manufacturer!



If anyone other than the manufacturer changes the lithium battery, there is the danger of an **explosion!** The replacement lithium battery must be UL approved.

Lithium batteries cannot simply be thrown away as domestic waste. Local regulations concerning the disposal of hazardous waste materials must be followed (e.g., by taking to specially designated collection areas).

4.10 Protection against Over-Heating

The computer system integrates temperature-sensitive components such as:

- » Hard disk (max. 55°C)
- » The CPU with a max. junction temperature of 105°C

Do not cover the device with paper, textiles or other objects. The minimum space between the housing and the next object is 50mm on each side. Make sure to allow enough airflow to the computer system when the device is assembled.

Protect the computer system from solar radiation or other thermal energy exposure.

Never place the functioning computer system in a closed case or box; or the inside air will heat above the maximum temperature and the system will be destroyed.

Keep the surface of the computer system free of dust, oil and other isolating materials, to prevent a reduction of the cooling efficiency.

4.11 Mechanical Safety: Safe Assembly and Mounting

Danger: The computer system must be fixed with a minimum of 4 screws using the mounting holes. It is very dangerous to place the device on the seat of a vehicle (car, truck, train, boat), while driving. In case of an accident, the device may hit a passenger or window.

Never drill new mounting holes into the chassis of the computer system because the internal electronics or hard disk may be damaged. Use only the mounting holes for assembly.

4.12 Environmental Safety: At 25°C No "Hot" Surfaces

Note: When the system runs at +25°C ambient temperature, no surfaces or other operating elements will have temperatures above +60°C. [MIL-STD-454M]

4.13 Environmental Safety: No Release of Toxins

Note: As long as the computer system is used in the specified operating temperature range, no toxic, corrosive, or explosive fumes or vapors are exposed. [MIL-STD-454M]

4.14 Environmental Safety: Laser Devices

Note: No assembled CD/DVD-Drive included.

4.15 Environmental Safety: Noise Emission

Note: This computer system is a low noise system; the level is less than 15 dbA.

4.16 Environmental Safety: Hazardous Environs

Danger: The computer system must not be used in a hazardous area because there is nothing to prevent spontaneous combustion. Never use the system in explosive gas or vapor, flammable dusts or ignitable fibers and filings.

4.17 Environmental Safety: Humidity and Water Spray

Danger: The computer system is not protected from splashing water. The protection is IP40.

4.18 Safety: Independent Software

Note: The system is divided into 2 different software parts, each running on its own microcontroller or CPU. Both parts communicate with a dedicated link.

1. Power management CPU and software are always running, even when the system's power is off.
2. The Geode LX800-CPU main processor is controlled from the power management CPU.

4.19 Safety: Recycling the Computer System

Disposal: Never dispose of old batteries or the entire computer system as domestic waste. Return it to the manufacturer for proper disposal.



4.20 Safety: Static Electricity

Warning: ESD Sensitive Device!

Excessive static electricity can damage the system. Before you handle the chassis or its components, make sure you are well grounded.

Handle the components by the grips or the front panel to help prevent accidental damage caused by static discharge.

4.21 Safety: Operator Security

Safety Instructions

It is important to protect yourself and your equipment before you perform any of the procedures outlined in this manual.

Before handling the equipment or when making changes to the configuration, power-off the system and disconnect all power cords from their source.

Use a grounding wrist strap or other static-dissipating device to prevent accidental damage caused by static discharge.

Only qualified, experienced electronics service personnel should access and handle the equipment.

5 Functions

5.1 Connectors

5.1.1 Front of the MPC20 / 20L

Version 0.1



Connector	Description
USB	2.0 USB
MIC	Stereo input for microphone
FRONT	Stereo speaker out
HD-LED (red)	Hard disk/CompactFlash activity indicator
POWER-LED (green)	OFF: No power available, system is not running Flashing: Power is applied, but computer is in the "off" state On: Computer is running
COMPACT FLASH	Socket for CF Type 1 and Type 2
DC-Input	10-30VDC power input
On/Off-Switch	Power switch

Version 1.0



Connector	Description
MIC	Stereo input for microphone
SPEAKER	Stereo speaker out
USB	2.0 USB
HD-LED (red)	Hard disk/CompactFlash activity indicator
POWER-LED (green)	OFF: No power available, system is not running Flashing: Power is applied, but computer is in the "off" state On: Computer is running
COMPACT FLASH	Socket for CF Type 1 and Type 2
On/Off-Switch	Power switch

5.1.2 Rear of the MPC20 / 20L

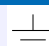
Version 0.1:



Connector	Description
Dual-USB	USB 2.0
KB/MS	PS/2 keyboard; with a Y-cable a PS/2 mouse (only MPC20)
VGA	Video output for RGB-CRT/LCD
WLAN	Option WLAN: antenna
LAN-Port 1	100MB / with activity / link – LED (only MPC20)
LAN-Port 0	100MB / with activity / link – LED

Version 1.0:



Connector	Description
	GND / shield
Dual-USB	USB 2.0
KB/MS	PS/2 keyboard; with a Y-cable a PS/2 mouse (MPC20 only)
DC-Input	10-30VDC power input
VGA	Video output for RGB-CRT/LCD
WLAN	Option WLAN: antenna
LAN-Port B	100MB / with activity / link – LED (MPC20 only)
LAN-Port A	100MB / with activity / link – LED

5.1.3 Front of the MPC21/21C

Version 0.1



Connector	Description
USB	USB 2.0
MIC	Stereo input for microphone
FRONT	Stereo speaker out
HD-LED (red)	Hard disk/CompactFlash activity indicator
POWER-LED (green)	OFF: No power available, system is not running Flashing: Power is applied, but computer is in the "off" state On: Computer is running
COMPACT FLASH	Socket for CF Type 1 and Type 2
DC-Input	Power input
On/Off-Switch	Power switch

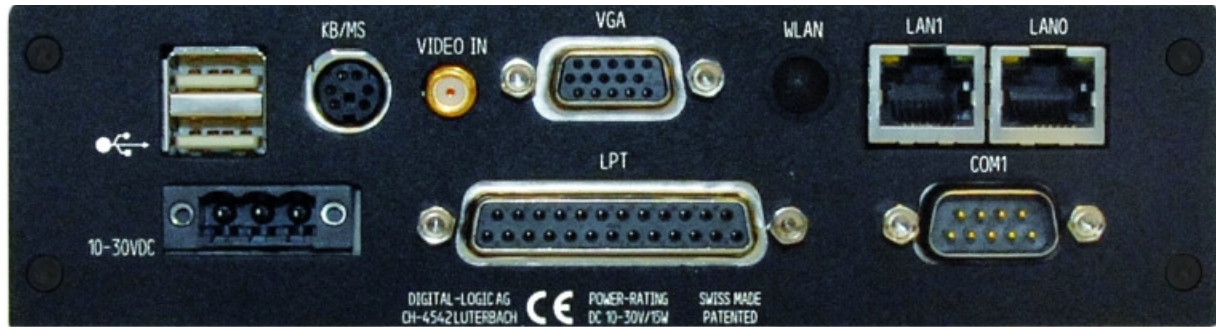
Version 1.0



Connector	Description
MIC	Stereo input for microphone
SPEAKER	Stereo speaker out
USB	USB 2.0
HD-LED (red)	Hard disk/CompactFlash activity indicator
POWER-LED (green)	OFF: No power available, system is not running Flashing: Power is applied, but computer is in the "off" state On: Computer is running
COMPACT FLASH	Socket for CF Type 1 and Type 2
VIDEO IN	CVBS video input
On/Off-Switch	Power switch

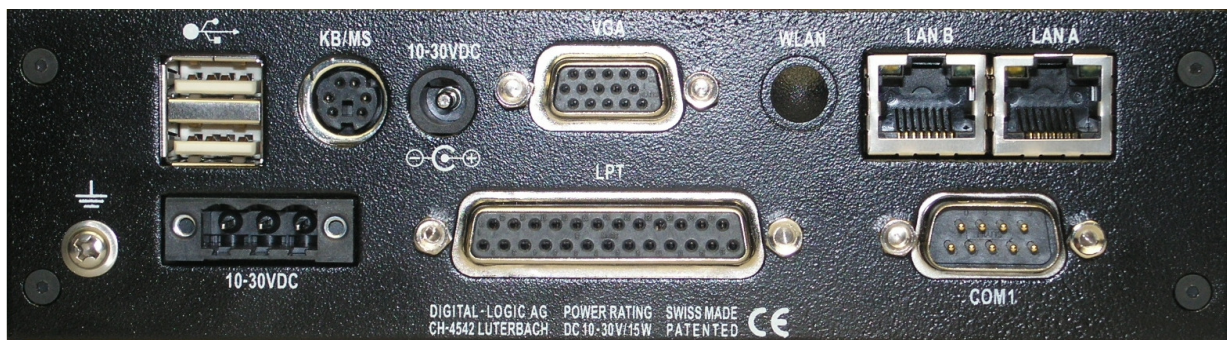
5.1.4 Rear of the MPC21

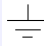
Version 0.1



Connector	Description
1st Row	
Dual-USB	USB 2.0
KB/MS	PS/2 keyboard; with a Y-cable a PS/2 mouse
Video-In	CVBS video input
VGA	Video output for RGB-CRT/LCD
WLAN	Option WLAN: antenna
LAN-Port 1	100MB / with activity / link – LED
LAN-Port 0	100MB / with activity / link – LED
2nd Row	
Power Input	10-30VDC power input
LPT	Printer interface
COM1	Serial interface RS232C

Version 1.0



Connector	Description
1st Row	
Dual-USB	USB 2.0
KB/MS	PS/2 keyboard; with a Y-cable a PS/2 mouse
DC-Input	Power input
VGA	Video output for RGB-CRT/LCD
WLAN	Option WLAN: antenna
LAN-Port B	100MB / with activity / link – LED
LAN-Port A	100MB / with activity / link – LED
2nd Row	
	GND / shield
Power Input	10-30VDC power input
LPT	MPC21: printer interface
COM1	Serial interface RS232C

5.1.5 Rear of the MPC21C

Version 1.0



Connector	Description
1st Row	
Dual-USB	USB 2.0
KB/MS	PS/2 keyboard; with a Y-cable a PS/2 mouse
DC-Input	Power input
VGA	Video output for RGB-CRT/LCD
WLAN	Option WLAN: antenna
LAN-Port B	100MB / with activity / link – LED
LAN-Port A	100MB / with activity / link – LED
2nd Row	
	GND / shield
Power Input	10-30VDC power input
COM2	Serial interface RS232C
COM1	Serial interface RS232C

5.1.6 Power Supply Connector

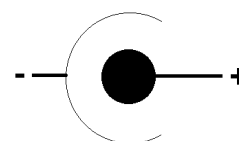
BLZ 5.08/3F SN SW (Part number: 1803050000) available from www.weidmueller.com .

Signal Definitions

- + Power 10-32V power supply
- GND 0V or the ground from the power supply
- Shield Grounding of the MPC20/21



Pin	Left	Middle	Right
Signal	GND	Chassis ground	Power 10-30V



5.2 DC-Power Input Specifications

5.2.1 Nominal DC-Power Input Voltage

The nominal DC-power input is within the 10Volt to 32Volt range. This means the device may be used with 12V or 24V batteries, usually found in boats, cars and trucks.

5.2.2 Minimal DC-Power Input Voltage Specification

The MPC runs with a minimal power of 7.2V, measured at the input of the rear connector. If installed in a vehicle that is starting its motor, the power supply voltage may drop under 8V for a moment.

The following limits are specified:

DC-Input Voltage	Duration	Comments
32V	Highest static input voltage	
12/24V	Always: nominal operation	
8V	Lowest static voltage	

5.2.3 IT-Power System

The product is suitable for use in IT-power systems.

5.3 Hard Disk 2.5" - Standard Type

The internal hard disk is mounted onto a caddy.

Technical Specifications (without the shock absorbers)	
Capacity	20-80GByte
Manufacturer	IBM Travelstar Model: IC25N020ATCS04 (20GB) IBM Travelstar Model: IC25N040ATCS04 (40GB) IBM Travelstar Model: IC25N060ATCS04 (60GB)
Sector size	512Byte
Data heads	16
Disks	2 or 4
Rotation speed	4200 RPM
Latency	7ms
Operating temperature	+5°C to +55°C
Relative humidity	8% to 90%
Power-on hours	333h / month
Maximum read/write duty cycles	20%
Vibration, operating	0.67G (5-500Hz) random
Shock, non-operating	800G / 1ms
Vibration, non-operating	3G (5-500Hz)

5.4 WLAN Option

A MiniPCI wireless LAN module can be installed. Option MPC2x WLAN MiniPCI consists of Intel's PRO/Wireless 2915ABG Network Connection MiniPCI card and a HF connector cable.

Intel PRO/Wireless 2915ABG Network Connection MiniPCI Card Specifications

- » Form Factor Mini PCI Type 3A
- » Dimensions: width 2.85 in x length 1.75 in x height 0.20 in (59.75 mm x 50.95 mm x 5 mm)
- » Weight: 0.7 oz. (12.90 g)
- » Antenna Interface Connector: Hirose U.FL-R-SMT mates with cable connector U.FL-LP-066
- » Dual Diversity Antenna: on-board dual diversity switching
- » Connector Interface: 124pin SODIMM edge connector
- » Voltage: 3.3Volt
- » Operating Temperature: 0 to +70 degrees Celsius
- » Humidity: 50 to 85% non-condensing

Frequency Modulation: 5 GHz (802.11a) 2.4 GHz (802.11b/g)

- » Frequency Band: 5.15 - 5.85 GHz, 2.400 - 2.472 GHz (dependent on country)
- » Modulation: BPSK, QPSK, 16 QAM, 64 QAM CCK, DQPSK, DBPSK
- » Wireless Medium: 5 GHz UNII: Orthogonal Frequency Division Multiplexing (OFDM)
- » 2.4 GHz ISM: Orthogonal Frequency Division Multiplexing (OFDM)
- » Channels: 4 to 12 non-overlapping, dependent on country
- » Channel 1-11 (US only); Channel 1-13 (Japan & Europe)
- » Data Rates: 54, 48, 36, 24, 18, 12, 9, 6 Mbps / 11, 5.5, 2, 1 Mbps

General

- » Operating Systems: Microsoft Windows XP, Microsoft Windows 2000
- » Wi-Fi® Alliance Certification for 802.11b, 802.11g, 802.11a, WPA, WPA2, WMM, EAP-SIM,
- » LEAP, PEAP, TKIP, EAP-FAST, EAP-TLS, EAP-TTLS, MD5
- » Cisco Compatible Extensions Certification v3.0
- » WLAN Standard IEEE 802.11g, 802.11b, 802.11a
- » Product Safety: UL, C-UL, CB (IEC 60590)

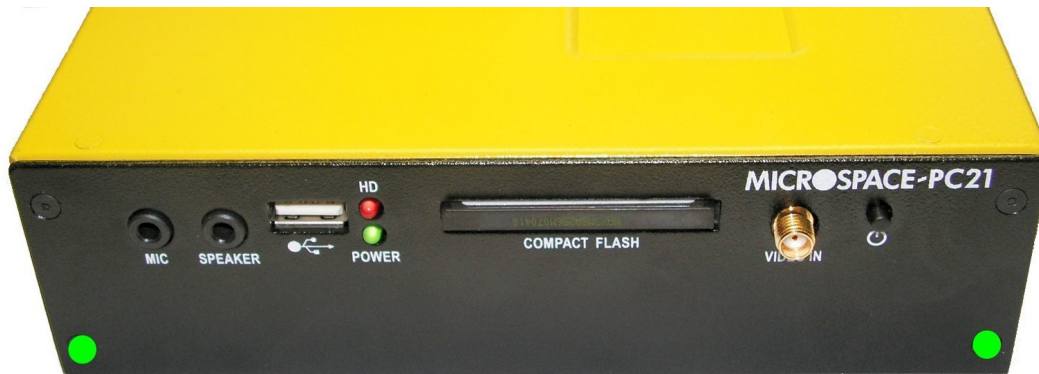
6 Hardware Installation

6.1 Install an additional PCI/104 card (MPC21/21C only)

To install a PCI/104 card, open the device as follows (use a star TX8 screwdriver):

1. Remove the lower screws marked in **green**:

2 on the **front plate**



and **2** on the **back plate**



2. Carefully turn over the device and remove the bottom.
3. Gently insert or remove the PCI/104 card.

7 Prepare the Computer System

Warning: ESD Sensitive Device! Place the embedded computer board on an isolated, ESD-protected surface. Ensure that all equipment, tools and people are fully protected against ESD.

7.1 Print Manuals from the Product CD

- » Place the Product-CD into a personal computer that is connected to a printer.
- » Open the CD; open the directory MPC20/21.

Note: Since the internal computer board is the MSB800 embedded computer, the corresponding manuals must be used for detailed information.

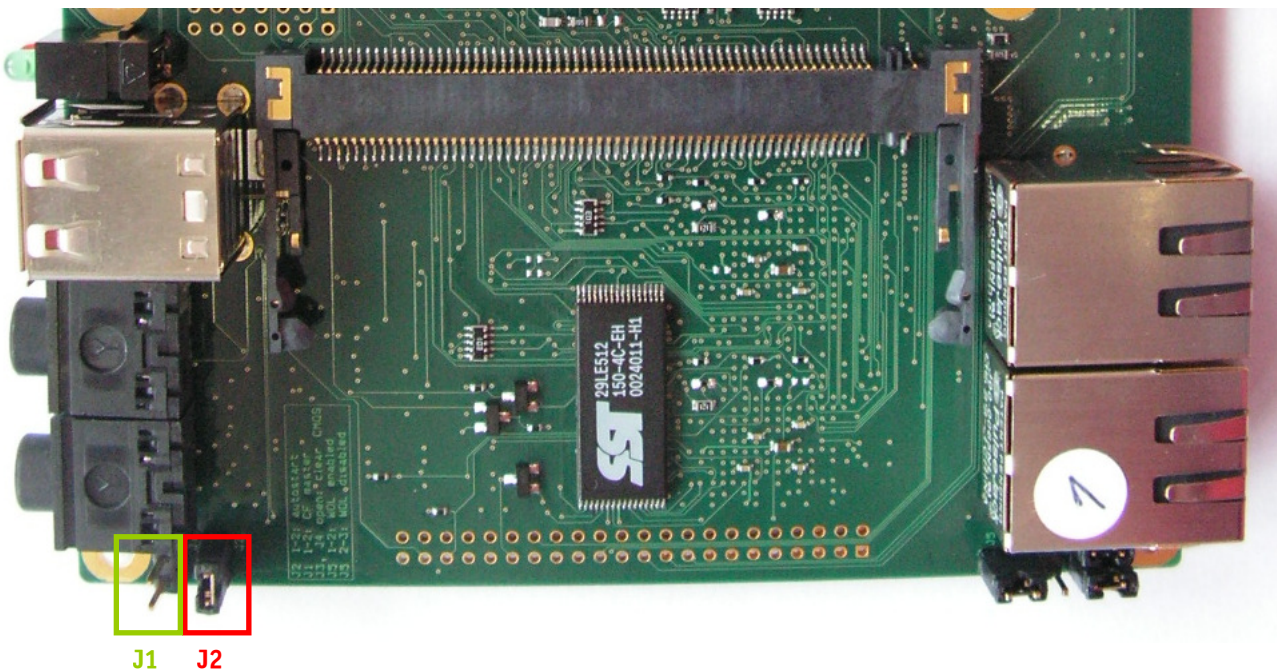
Printout the following detailed manuals:

1. The Technical/Hardware manual: MSB800_Detailed.pdf
2. The BIOS/Driver/Software manual: GEODE_LX800.pdf

7.2 Jumper Configuration

To open the device, refer to Section 6.1.

Jumper	Structure	Open	Closed	Remarks
J1	CompactFlash master / slave	Slave	Master	
J2	Autostart function	Disabled	Enabled	Disabled corresponds to manual start



7.3 Connect the Peripherals to the System

Prepare the following peripherals:

- » VGA monitor (LCD or CRT) with a resolution up to 1024x768 pixel
- » PS/2 keyboard
- » USB mouse
- » LAN cable, if available
- » USB CD drive or floppy drive
- » Power supply with 12Volts and minimum 30Watts

1. Connect the VGA monitor to the 15pin high density Subconnector.
2. Connect the keyboard to the PS/2 connector.
3. Connect the USB mouse to one of the USB connectors.
4. Connect a USB CD-drive or a USB floppy drive to one of the USB connectors.
5. Connect the 12Volt power supply to the power input of the system.

Danger: The polarity must be correct or the electronic board may be destroyed.

Insert a boot device: USB stick, floppy or bootable CompactFlash or use a PXE/RPL server to boot from LAN A (*in earlier versions LAN 0*).

Photo of MPC20 Version 1.0



Photo of MPC21 Version 1.0



8 Power On the System

Attention: Check that the voltage is regulated to +12Volts and that the polarity is correct.
The supply voltage must be in the range of 8Volts to maximum 32Volts.

Note: Jumper **J2** determines the behavior after power-on. The autostart function is enabled by default from the factory (to set **J2**, refer to Section 7.2).

Switch on the external 12V power supply. Depending on the setting of Jumper **J2**, the following occurs:

- » In *autostart mode* the board automatically enters the boot sequence and the green "Power LED" lights up.
- » In *non-autostart mode* the board will remain in standby until the power button is pressed. The green "Power LED" will light up when the power button is pressed.

After a few seconds the screen should display the initial BIOS messages:



```

LX DB800
Rev: Kontron AG LX800_1.36(BRM)          Built: 04/13/2010 10:00:41
Geode LX Rev: C3 @ 500MHz                PCI: 33MHz                5536 Rev: B1
Memory: 237248k @ 333MHz/DDR            CAS: 2.5                CPUDI: 15 GLDI: 10
Floppy A: 1.44M                          COM1: 03F8 LPT1: 0378   GeodeROM: 4.52.36
RTC: Present                             COM2: 02F8              USA: 03B0
USB: Legacy                               VideoBIOS: 060C
PM: Disabled
CPU Temp: 66°C

(c) 1999-2005 Copyright Advanced Micro Devices

Attempting to boot a Floppy...

```

8.1 BIOS Setup

Since the BIOS auto-configures during the start-up procedure, the user normally does not enter the BIOS setup. Manual setup is only needed to change the default settings. Refer to the BIOS/Driver/Software manual on the Product CD for the BIOS setup details.

8.2 Boot Up the Operating System and Install the Drivers

Depending on which boot drive is available, boot up the operating system from the CompactFlash or hard disk (if installed as an option).

To install the drivers, see the BIOS/Driver/Software/ manual on the Product CD.

8.3 FreeDOS, DSLinux und ELinOS Bootflash

8.3.1 Free DOS

FreeDOS (<http://www.freedos.org/>) is available on the boot device and contains a variety of useful programs for configuring a computer system. With these tools partitions can be manipulated and data transferred.

The most important of these programs are: Fdisk, Format, Sys, XCOPY, Edit, Dos Navigator (dn) and UnZip.

8.3.2 SLAX LINUX

The Linux installed on the boot device is based on SLAX Linux (<http://www.slax.org/?lang=en>). It boots with a graphical interface and includes many useful applications.

The most important of these are: Web browser, xine, Mplayer (Multimedia Player) and PDF-Viewer.

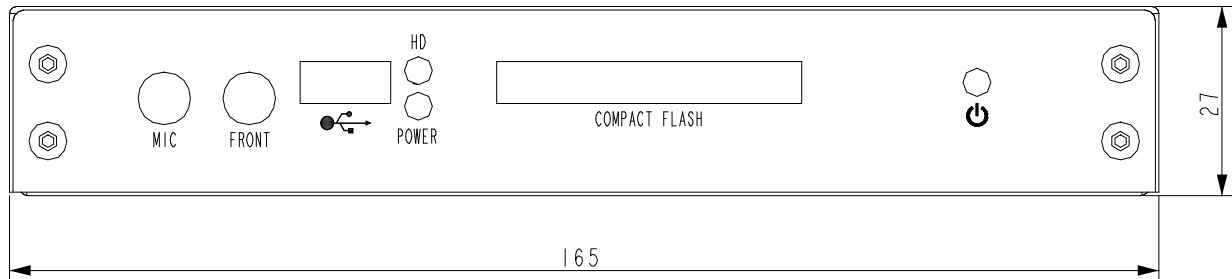
8.3.3 ELinOS Demo

This demo is a Linux Tetris game generated with ELinOS 4.0 (<http://www.sysgo.com/>). It shows how fast embedded Linux can boot up and how little storage space it requires.

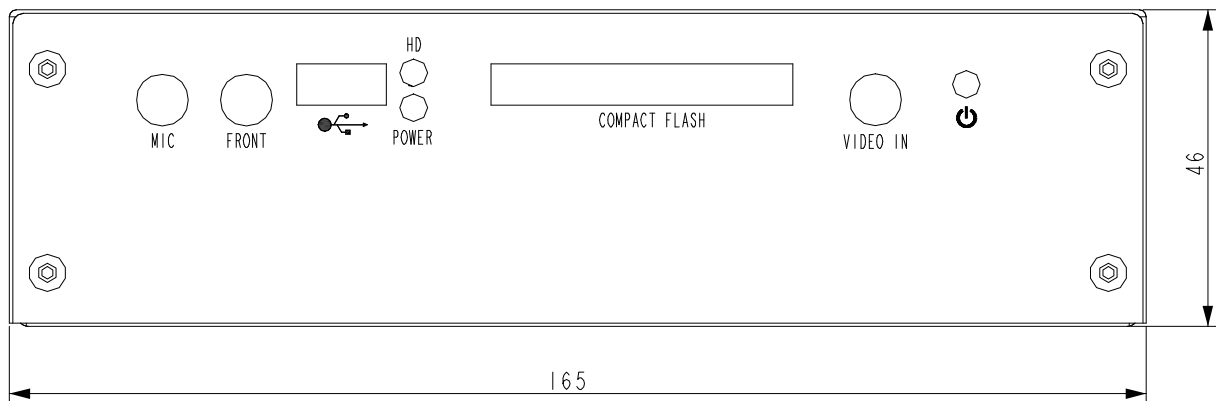
9 Dimensions and Diagrams

9.1 Front Views

MPC20/20L (Version 1.0)

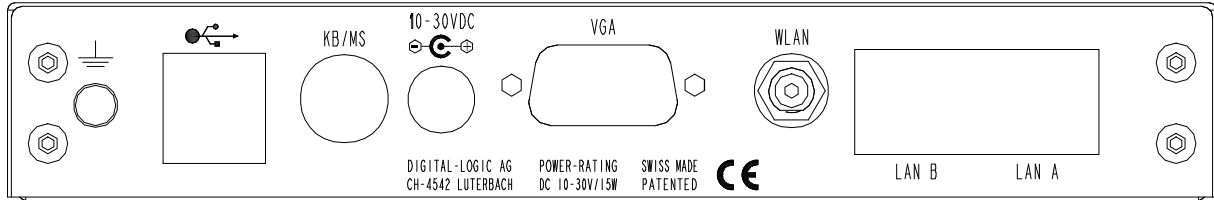


MPC21/21C (Version 1.0)

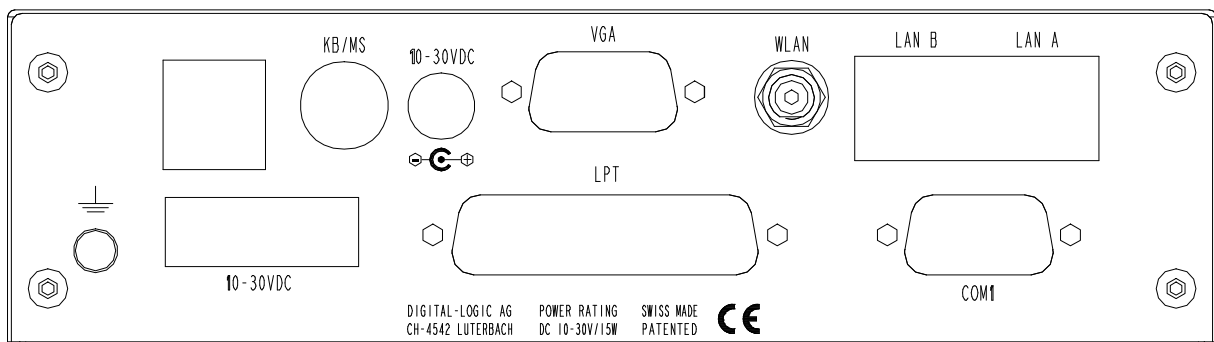


9.2 Rear Views

MPC20/20L (Version 1.0)

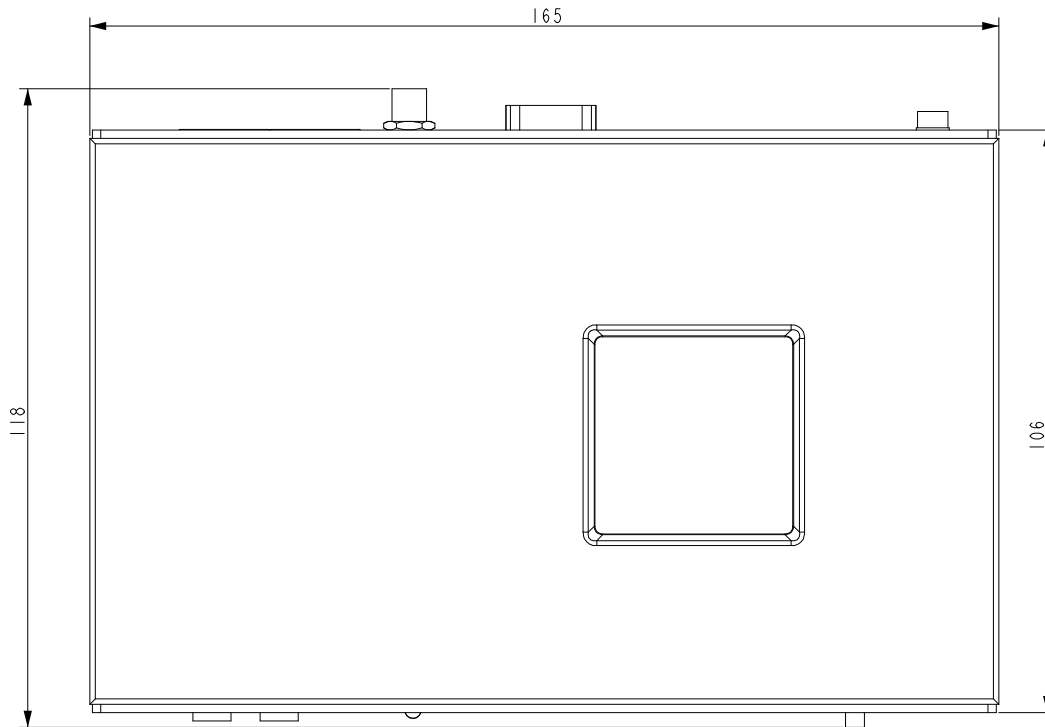


MPC21/21C (Version 1.0)

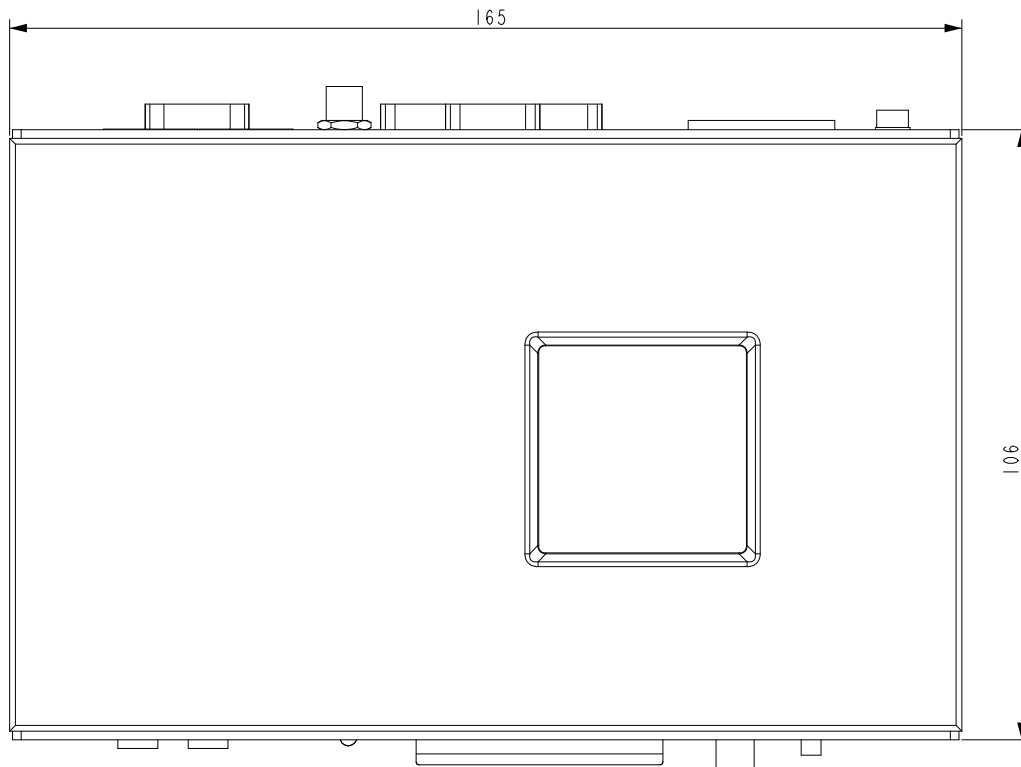


9.3 Top Views

MPC20/20L (Version 1.0)

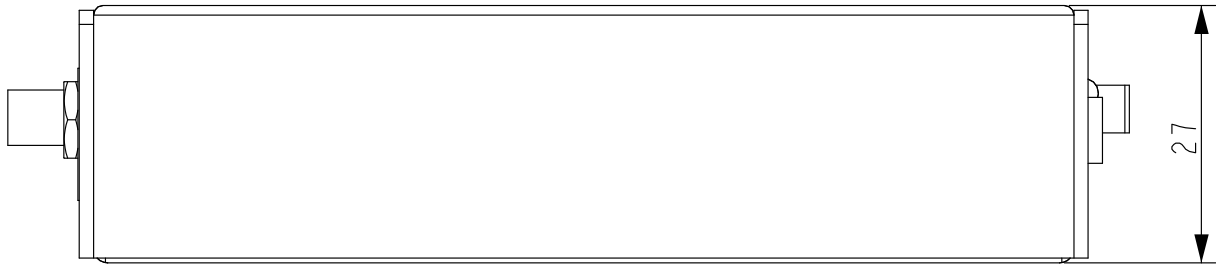


MPC21 (Version 1.0)

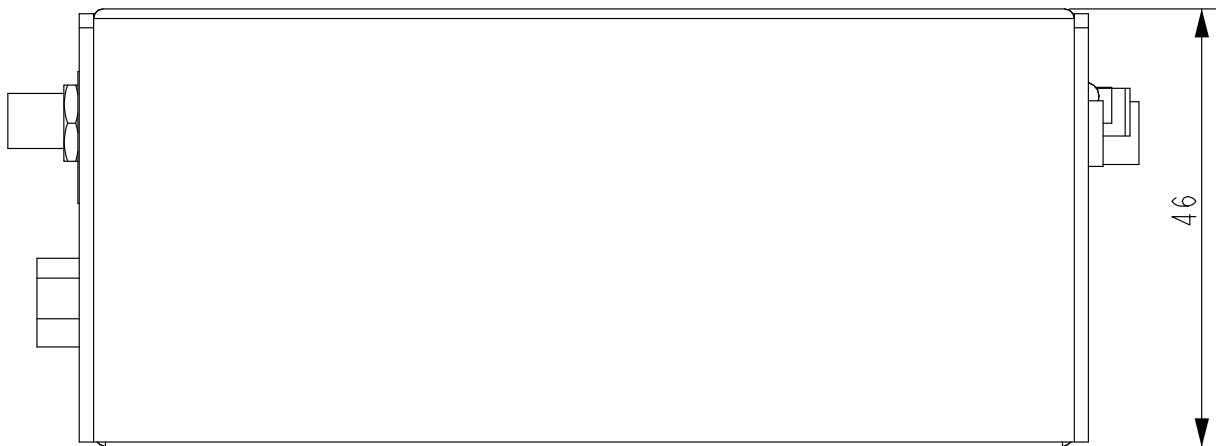


9.4 Side Views

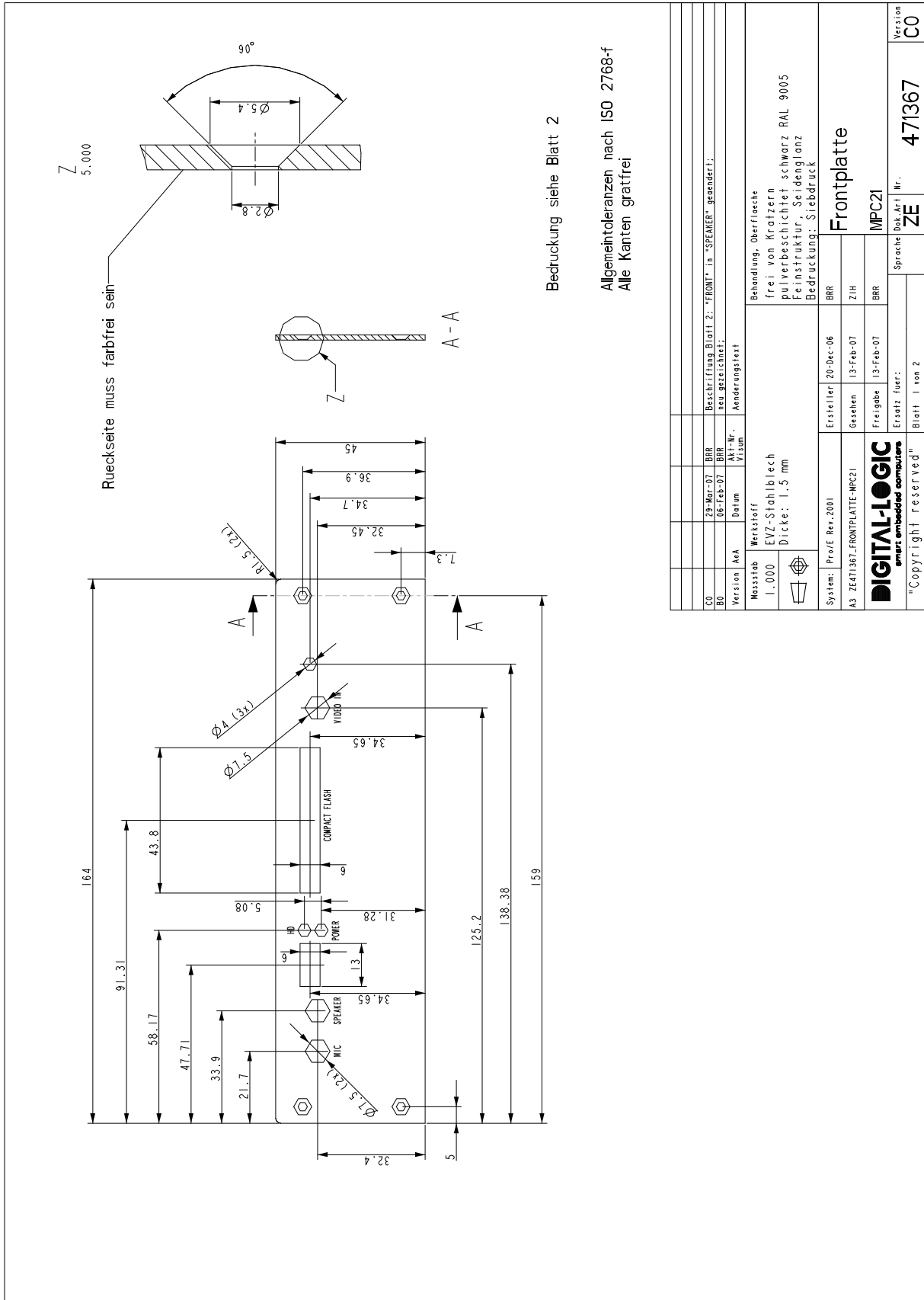
MPC20/20L (Version 1.0)



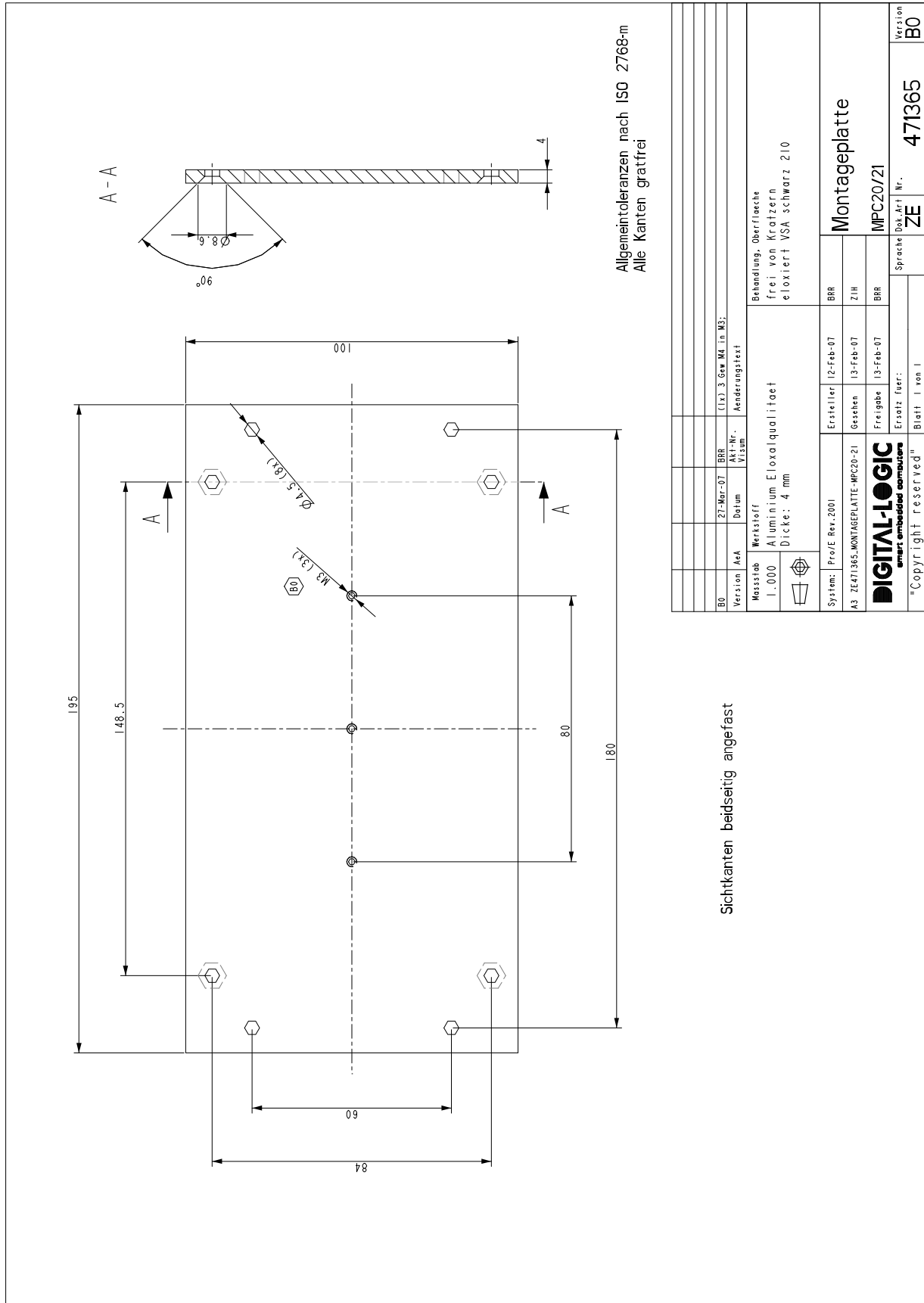
MPC21/21C (Version 1.0)



9.5 Front Plate MPC21/21C



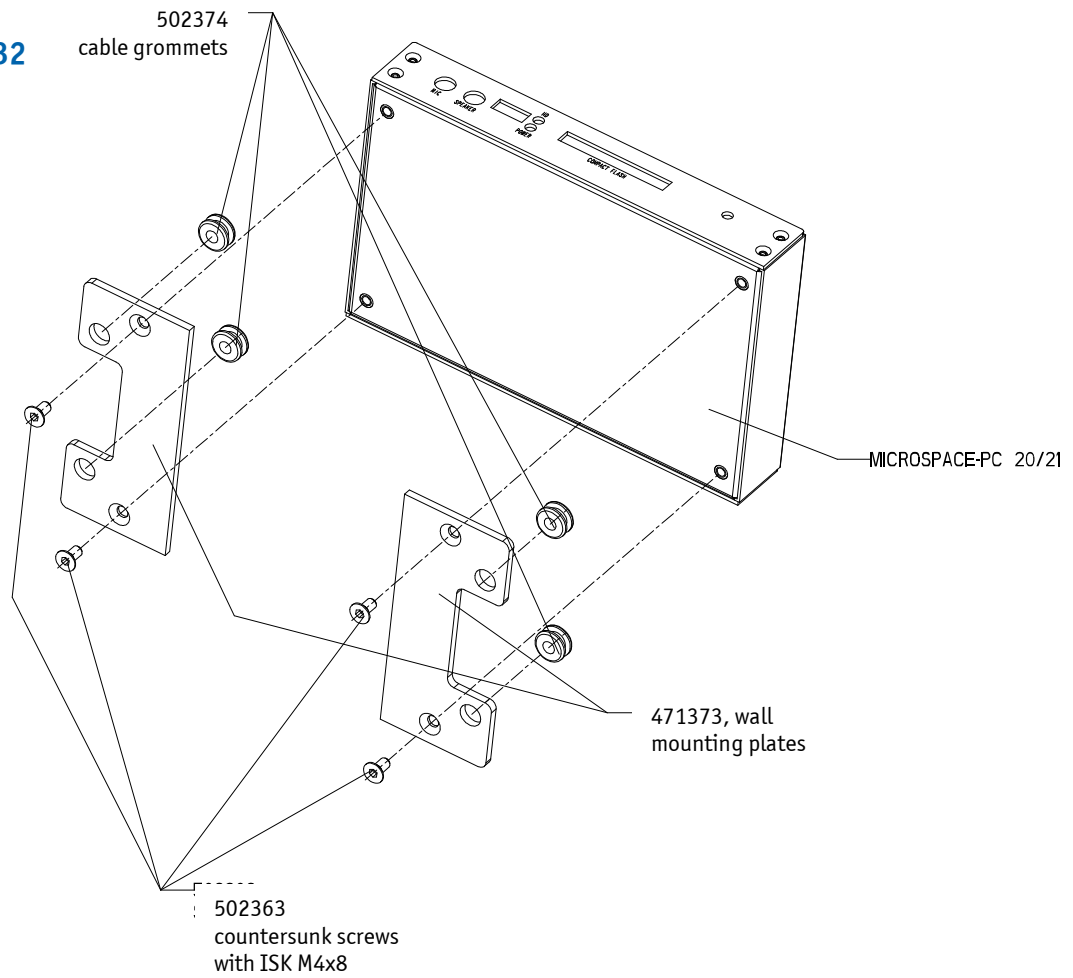
9.6 Mounting Plate MPC20/20L/21/21C



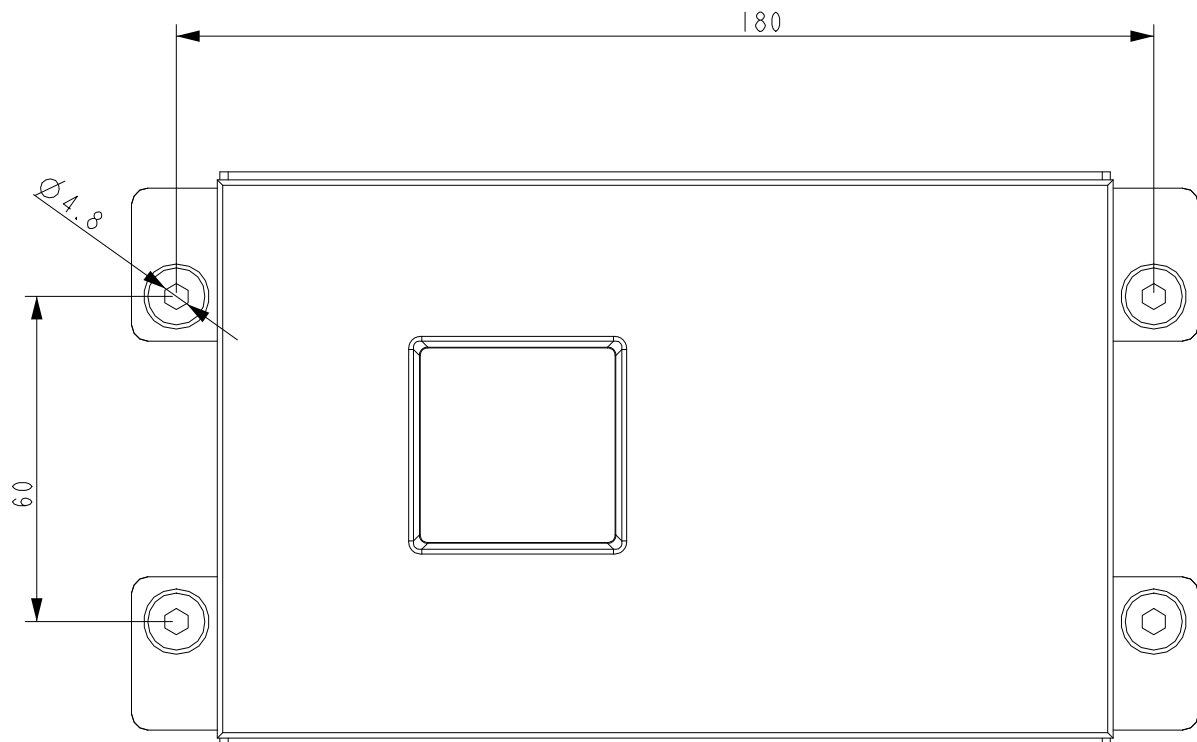
Version A/A		Date		Akt-Nr. / Y13um		BRR (1x) 3 Gew M4 in M3; Änderungsstext	
27-Mar-07							
B0							
Massstab		Werkstoff		Behandlung, Oberfläche			
1:000		Aluminium Eloxalqualifacet		frei von Kratzern			
Dicke: 4 mm				eloxiert VSA schwarz 210			
System: Pro/E Rev.2001		Erstiller		BRR			
A3 ZE471365-MONTAGEPLATE-MPC20-21		Gesehen		12-Feb-07			
DIGITAL-LOGIC smart embedded computers		Freigabe		13-Feb-07			
		Ersatz Iser:		BRR			
"Copyright reserved"		Blatt 1 von 1		Sprache		ZE	
				Doc. Art. Nr.		471365	
				Montageplatte		MPC20/21	
				Version		B0	

9.7 Wall Mounting Kit

Article 812032



Drilling Plan



10 Core BIOS

10.1 BIOS History

For the MPC20 / MPC20L / MPC21 / MPC21C:

Version	Date	Status	Modifications
1.23	02.2008		Memory problem solved
1.24	10.2008		SelfTest BIOS Extension Ultra-X included. Enter with < ALT - D > during the boot up. <hr/> ATTENTION: Since BIOS version V1.24, the BIOS size is 512kB instead of 256kB. To download the BIOS, use one of the following commands: <hr/> BIOS V1.23 and earlier: flashrom /sFFFC0000 filename.cor BIOS V1.24 and later: flashrom /sFFF80000 filename.cor
1.25	01.2010		Kontron logo added / Ultra-X removed

(For previous BIOS versions, please see the GEODE LX800 manual.)

For the MPC20WOL / MPC21WOL:

Version	Date	Status	Modifications
1.25W	02.2008		Memory problem solved

10.2 Setup Menu Screens and Navigation

The XpressROM™ Setup Menu contains a number of features and options. You are advised to evaluate the menu options prior to the shipment of your platform to ensure the removal of options that could have a negative consequence if users change them.

The controls for the setup menu are:

Function	Key
BIOS setup	F1
Change values	ENTER
Jump	ARROWS / SPACE
Save	X
Back / exit	ESC

10.3 BIOS Setup

10.3.1 Main Menu

The main menu is the first screen that appears when a user selects **F1** during the boot process. Below is a screen shot of the main menu. Press the letter or use the arrow keys (**↑↓**) to select an option.

```

Main Menu
A. Time 01:38:31
B. Date 02/20/2007

C. Motherboard Device Configuration
D. Memory and Cache Optimization
E. System Clock/PLL Configuration
F. Power Management
H. Miscellaneous Configuration
I. ISA I/O and Memory Configuration
O. Boot Order

L. Load Defaults

S. Save Values Without Exit
Q. Exit Without Save
X. Save values and Exit

Set the current time in the RTC

```

Changing the Time

To change the time select **A** from the main menu. The following submenu prompt appears:

```

Main Menu/A. Time
Time:
TIME as HH:MM[:SS] (Seconds are optional)

```

Enter the time in the format listed. For example: 11:30:01 then hit **<enter>**.

Changing the Date

To change the date, select **B** from the main menu. The following submenu prompt appears:

```

Main Menu/B. Date
Date: _
Date as MM/DD/YYYY

```

Enter the date in the format listed. For example: 12/16/2010 then hit **<enter>**.

11 Boot from LAN – PXE & WOL (Wake On LAN)

11.1 MPC20WOL and MPC21WOL

11.1.1 Boot from LAN (PXE)

PXE Setup in the BIOS

BIOS-Setup Screen with the LAN-BOOT (PXE)

Disable / Enable menu:

```

XpressROM Setup
Version: Digital-Logic AG LX800_1.22MSB800(BRM)   Built: 04/24/2007 10:54:59
LPC CARD I/O Device Configuration

FDC controller enable: Disabled
Serial Port 1: 0x3F8 IRQ 4
Serial Port 2: 0x2F8 IRQ 3

Parallel Port: 0x378
MODE: Compatible
IRQ: IRQ 7
DMA: None

LAN 0 device enable: Enabled
LAN 0 boot enable: Disabled
LAN 1 device enable: Enabled

IRQ3 on LPC/ISA: Disabled      IRQ9 on LPC/ISA: Disabled
IRQ4 on LPC/ISA: Disabled      IRQ10 on LPC/ISA: Disabled
IRQ5 on LPC/ISA: Disabled      IRQ11 on LPC/ISA: Disabled
IRQ6 on LPC/ISA: Disabled      IRQ15 on LPC/ISA: Disabled
IRQ7 on LPC/ISA: Disabled

```

11.1.2 PXE Boot and PXE Protocol

When the boot process begins, the screen clears and the computer begins its Power On Self Test (POST) sequence.

Shortly after completion of the POST, the Boot Agent software stored in the flash ROM executes. The Boot Agent then displays an initialization message, similar to the one below, indicating that it is active:

```

Initializing Intel(R) Boot Agent Version X.X.XX
PXE 2.0 Build 083 (WfM 2.0)

```

Note: This display may be hidden by the Kontron splash screen. Consult the Kontron documentation for details.

Enter the LAN boot BIOS setup with **CTRL+ALT+S**.

```

Intel(R) Boot Agent Version X.X.XX
Setup Menu

Network Boot Protocol      PXE (Preboot eXecution Environment)
Boot Order                 Use BIOS Setup Boot Order
Show Setup Prompt         Enabled
Setup Menu Wait Time      2 seconds
Legacy OS Wakeup Support   Disabled

Select remote boot protocol.

<Esc>   <Space>   <Enter>   <F4>
Cancel Changes  Change Value  Next Option  Save Configuration

```

The configuration setup menu shows a list of configuration settings on the left and their corresponding values on the right. Key descriptions near the bottom of the menu indicate how to change values for the configuration settings. For each selected setting, a brief "mini-Help" description of its function appears just above the key descriptions.

1. Highlight the setting to change using the **arrow** keys.
2. Once the setting to change has been accessed, press the **spacebar** until the desired value appears.
3. Once the changes are complete, press **F4** to update the adapter with the new values. Any changed configuration values are applied as the boot process resumes.

The table below provides a list of configuration settings, their possible values, and their detailed descriptions:

Boot Agent Configuration Settings

Configuration Setting	Possible Values	Description
Network Boot Protocol	PXE (Preboot eXecution Environment)	Controls whether the RPL or PXE boot protocol will be used. Select PXE for use with WFM-compatible network management programs, such as LANDesk* Management Suite, Windows* 2000 RIS, and Linux*.
	RPL (Remote Program Load)	Select RPL for legacy-style remote booting, as well as for Novell* Netware* remote boot solutions. Note: Depending on the configuration of the Boot Agent, this parameter may not be changeable.
Boot Order	Use BIOS Setup Boot Order	Sets the boot order in which devices are selected during boot up if the computer does not have its own control method.
	Try network first, then local drives	If your client computer's BIOS supports the BIOS Boot Specification (BBS), or allows PnP-compliant selection of the boot order in the BIOS setup program, then this setting will always be Use BIOS Setup Boot Order and cannot be changed. In this case, refer to the BIOS setup manual specific to your client computer to set up boot options.
	Try local drives first, then network	
	Try network only	If your client computer does not have a BBS- or PnP-compliant BIOS, you can select any one of the other possible values listed for this setting except for Use BIOS Setup Boot Order .
	Try local drives only	
Legacy OS Wakeup Support. (For 82559-based adapters only)	0 = Disabled (default value)	If set to 1, the boot agent will enable PME in the adapter's PCI configuration space during initialization. This allows remote wake-up under legacy operating systems that don't normally support it.
	1 = Enabled	Note: Enabling this makes the adapter technically non-compliant with the ACPI specification, which is why the default is disabled.

Note: If, during PXE or RPL boot, more than one adapter is installed in a computer and you want to boot from the boot ROM located on a specific adapter, you can do so by removing the adapter from the BIOS Boot Order or disabling the flash by running IBAUTIL -FlashDisable on the desired adapter.

11.1.3 Wake On LAN (WOL)

You can find the WOL tools here: BSP CD LX800\TOOLS\WAKEONLAN\ .

1. Comments:

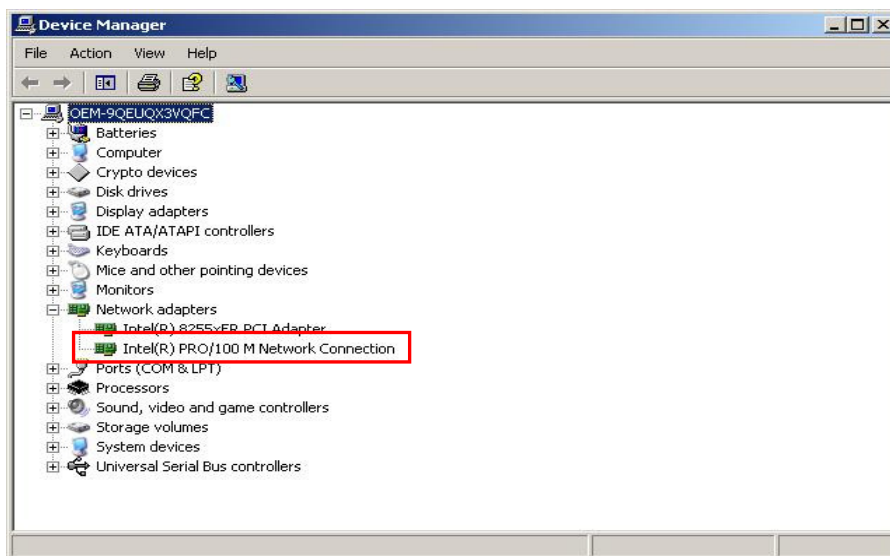
To awaken a PC in stand-by mode (that means only shut down the Windows OS, then the green LED is blinking) over the network, a so called "Magic Packet" must be sent to the LAN interface. There are various tools for sending Magic Packets.

2. Requirements:

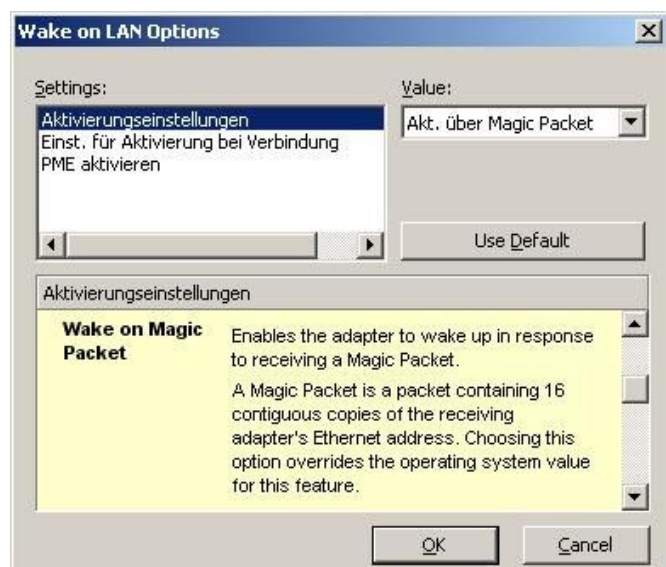
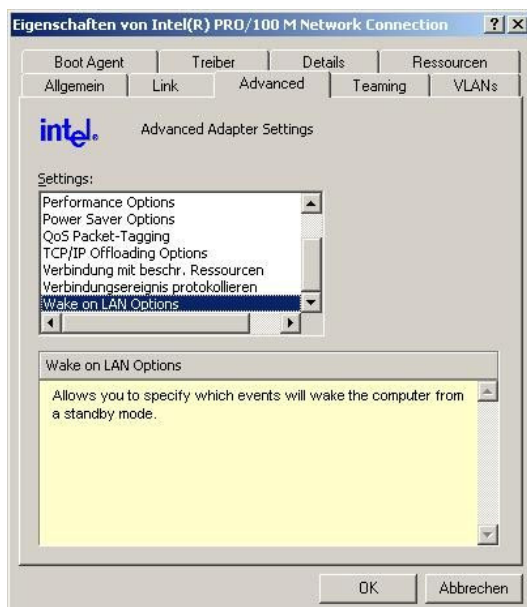
- MPC20WOL or MPC21WOL with LAN drivers installed
- MAC address is known (this can be read out on Windows XP with IPCONFIG / ALL)
- The host PC has a LAN connection and the WOL.EXE tool (on DIGITAL-LOGIC AG's Product CD)

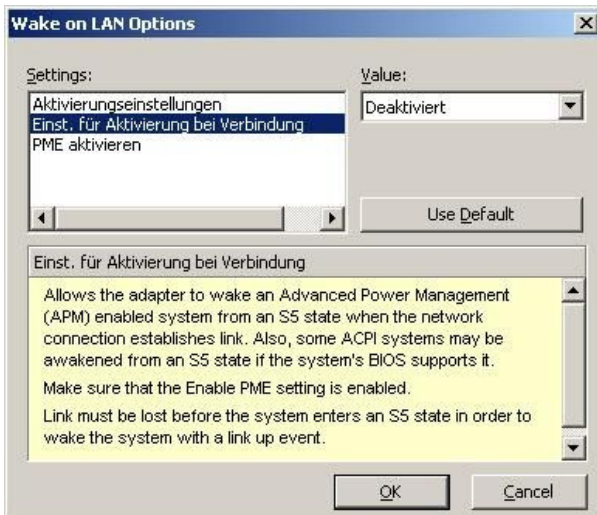
3. Preparation:

In Windows XP, open the Device Manager / Network adapters and then the Properties of the "Intel(R) PRO/100 M Network Connection".



Under the Power Management tab, select the option "Device can wake the computer from stand-by" and click "OK".



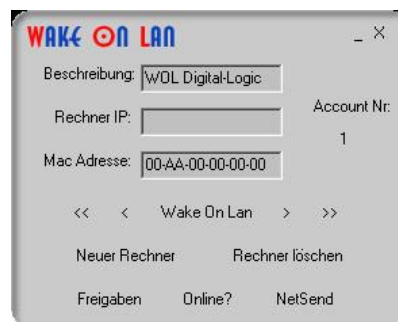


4. Shutdown:

Shutdown the computer with Standby mode.

5. To Wake Up:

On the host computer, start the tool "WOL.EXE" and enter the desired MAC address. By clicking on the "Wake On LAN" button, the client computer will be awakened.



Find the MAC address by opening a DOS window (Start → Execute → CMD); enter "ipconfig /all" and note down the MAC address (for example 00 AA 00 00 00 00).

```

C:\WINDOWS\System32\cmd.exe
C:\Dokumente und Einstellungen\MCE.MCEENGINEERING>ipconfig /all

Windows-IP-Konfiguration

    Hostname . . . . . : mceengineering
    Primäres DNS-Suffix . . . . . :
    Knotentyp . . . . . : Unbekannt
    IP-Routing aktiviert . . . . . : Nein
    WINS-Proxy aktiviert . . . . . : Nein

Ethernetadapter LAN-Verbindung:

    Verbindungsspezifisches DNS-Suffix: LUT.DIGITALLOGIC.COM
    Beschreibung. . . . . : Intel(R) PRO/100 UE Network Connecti
on
    Physikalische Adresse . . . . . : 00-AA-00-00-00-00
    DHCP aktiviert . . . . . : Ja
    Autokonfiguration aktiviert . . . . . : Ja
    IP-Adresse . . . . . : 192.168.10.233
    Subnetzmaske . . . . . : 255.255.255.0
    Standardgateway . . . . . : 192.168.10.30
    DHCP-Server . . . . . : 192.168.10.4
    DNS-Server . . . . . : 192.168.10.4
                          212.101.0.10
                          212.101.4.253
    Lease erhalten. . . . . : Donnerstag, 5. Februar 2004 14:34:36
    Lease läuft ab. . . . . : Sonntag, 8. Februar 2004 14:34:36

C:\Dokumente und Einstellungen\MCE.MCEENGINEERING>

```


11.2 MPC20/20L/21/21C

11.2.1 Boot from LAN (PXE)

PXE Setup in the BIOS

BIOS Setup Screen with the LAN-BOOT (PXE) Disable/ Enable menu:

```

XpressROM Setup
Version: Digital-Logic AG LX800_1.22MSB800(BRM)      Built: 04/24/2007 10:54:59
LPC CARD I/O Device Configuration

FDC controller enable: Disabled
Serial Port 1: 0x3f8 IRQ 4
Serial Port 2: 0x2f8 IRQ 3

Parallel Port: 0x378
MODE: Compatible
IRQ: IRQ 7
DMA: None

LAN 0 device enable: Enabled
LAN 0 boot enable: Disabled
LAN 1 device enable: Enabled

IRQ3 on LPC/ISA: Disabled      IRQ9 on LPC/ISA: Disabled
IRQ4 on LPC/ISA: Disabled      IRQ10 on LPC/ISA: Disabled
IRQ5 on LPC/ISA: Disabled      IRQ11 on LPC/ISA: Disabled
IRQ6 on LPC/ISA: Disabled      IRQ15 on LPC/ISA: Disabled
IRQ7 on LPC/ISA: Disabled

```

After **enabling** the LAN-Boot, the Password must be entered.

```

XpressROM Setup
Version: Digital-Logic AG LX800_1.22MSB800(BRM)      Built: 04/24/2007 10:54:59
LPC CARD I/O Device Configuration

FDC controller enable: Disabled
Serial Port 1: 0x3f8 IRQ 4
Serial Port 2: 0x2f8 IRQ 3

Parallel Port: 0x378
MODE: Compatible
IRQ: IRQ 7
DMA: None

LAN 0 device enable: En
LAN 0 boot enable: Disabled
LAN 1 device enable: Enabled

IRQ3 on LPC/ISA: Disabled      IRQ9 on LPC/ISA: Disabled
IRQ4 on LPC/ISA: Disabled      IRQ10 on LPC/ISA: Disabled
IRQ5 on LPC/ISA: Disabled      IRQ11 on LPC/ISA: Disabled
IRQ6 on LPC/ISA: Disabled      IRQ15 on LPC/ISA: Disabled
IRQ7 on LPC/ISA: Disabled

```

Enter PASSWORD: _

The password must be requested with the PXE License Order Form on page 49.

PXE Boot and PXE Protocol

PXE is defined on a foundation of industry-standard Internet protocols and services that are widely deployed in the industry, namely TCP/IP, DHCP, and TFTP. These standardize the *form* of the interactions between clients and servers. To ensure that the *meaning* of the client-server interaction is standardized as well, certain vendor option fields in DHCP protocol are used, which are allowed by the DHCP standard. The operations of standard DHCP and/or BOOTP servers (that serve up IP addresses and/or NBPs) will not be disrupted by the use of the extended protocol. Clients and servers that are aware of these extensions will recognize and use this information, and those that do not recognize the extensions will ignore them.

In brief, the PXE protocol operates as follows. The client initiates the protocol by broadcasting a DHCPDISCOVER containing an extension that identifies the request as coming from a client that implements the PXE protocol. Assuming that a DHCP server or a Proxy DHCP server implementing this extended protocol is available, after several intermediate steps, the server sends the client a list of appropriate Boot Servers. The client then discovers a Boot Server of the type selected and receives the name of an executable file on the chosen Boot Server. The client uses TFTP to download the executable from the Boot Server. Finally, the client initiates execution of the downloaded image. At this point, the client's state must meet certain requirements that provide a predictable execution environment for the image. Important aspects of this environment include the availability of certain areas of the client's main memory, and the availability of basic network I/O services.

Deployment of servers

On the server end of the client-server interaction there must be available services that are responsible for providing redirection of the client to an appropriate Boot Server. These redirection services may be deployed in two ways:

1. Combined standard DHCP and redirection services.

The DHCP servers that are supplying IP addresses to clients are modified to become, or are replaced by servers that serve up IP addresses for all clients and redirect PXE-enabled clients to Boot Servers as requested.

2. Separate standard DHCP and redirection services.

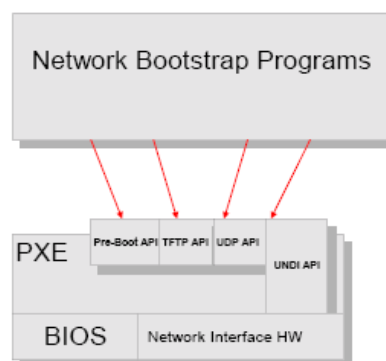
PXE redirection servers (Proxy DHCP servers) are added to the existing network environment. They respond only to PXE-enabled clients, and provide only redirection to Boot Servers. Each PXE Boot Server must have one or more executables appropriate to the clients that it serves.

Preboot Execution Environment (PXE) Specification 11

Version 2.1 September 20, 1999

Copyright © 1998, 1999 Intel Corporation. All rights reserved.

This diagram illustrates the relationship between the NBP (the remote boot program) and the PXE APIs.



11.2.2 PXE License Order Form (for MPC20 / MPC20L / MPC21 / MPC21C)

The PXE function **must be** licensed before it can be enabled (MPC20 / MPC21 / MPC21C only). To order, fill out and sign this form; return it to the fax number below. This form may be printed out separately from the digital copy of this manual on the Product CD. *The PXE license is not necessary for the MPC20WOL and MPC21WOL.*

Note: **Each** computer system requires an individual, one-time royalty payment for the PXE-license. After receipt of payment, you will be emailed the password necessary to enable the PXE function (see Section 11.2.1).

Customer Information:

Company Name:

Your Name:

Street Address:

ZIP / City:

Email:

Information for the PXE-License:

Product	Number of Licenses	KCC Part Nr. 809108
---------	--------------------	---------------------

MPC20	<input type="checkbox"/>	_____
-------	--------------------------	-------

MPC21/C	<input type="checkbox"/>	_____
---------	--------------------------	-------

Price per license: 17 Euro

Contact your Sales Manager for more information, price in USD/CHF, or if you have any questions.

Date:

dd / mm / yyyy

Signature:

Fax this form to your Kontron Sales Manager:

(please write in his/her name)

Fax: +0041 32 681 58 01

PXE Boot from LAN, BootManager License Agreement

READ THIS SOFTWARE LICENSE AGREEMENT CAREFULLY BEFORE CLICKING ON THE "I AGREE" BOX OR OPENING THE PACKAGE. YOU WILL BE BOUND BY ITS TERMS IF YOU BREAK THE SEALED PACKAGE.

IMPORTANT! The enclosed software is licensed and may be used only on the condition that you as an **individual end user and licensee** (hereinafter referred to as "**YOU**") agree with bootix Technology GMBH (hereinafter referred to as "**Bootix**") to the terms and conditions set forth in the following **Software License Agreement** (hereinafter referred to as "**AGREEMENT**"). If you do not agree to the terms contained in this AGREEMENT, YOU must return this package UNOPENED to bootix, or YOUR dealer within one week after you receive it, and YOUR license fee, if any, will be refunded.

bootix will grant YOU a non-transferable, non-exclusive license to use the enclosed software (the "**Licensed Software**") and the accompanying documentation (the Licensed Software, the media embodying the Licensed Software, and the documentation are referred to in this Agreement as the "**LICENSED MATERIALS**"), if any, on one single computer if YOU agree to the following terms and conditions:

1. TERM. This Agreement is effective from the date on which YOU click the "I agree" box or open the package containing the LICENSED MATERIALS. You may terminate the Agreement at any time by destroying the LICENSED MATERIALS. The AGREEMENT and YOUR license to use the LICENSED MATERIALS will also terminate if YOU fail to comply with any term or condition herein.

2. LICENSE. The license granted to YOU by bootix authorizes YOU to use the Licensed Software on any one, single computer only. A separate license, is required for any other computer on which YOU intend to use the Licensed Software. YOU MAY NOT USE, COPY, OR MODIFY THE LICENSED MATERIALS, IN WHOLE OR IN PART, EXCEPT AS EXPRESSLY PROVIDED IN THIS AGREEMENT.

3. OWNERSHIP. The LICENSED MATERIALS are the sole and exclusive property of bootix and any company or a division thereof which bootix controls or is controlled by, or which may result from the merger or consolidation with Bootix (hereinafter its "**Affiliates**") and/or its/their software suppliers. By paying the fee required for this license, YOU do not become the owner of the LICENSED MATERIALS, but are entitled to use them according to the terms of this Agreement.

4. RESTRICTION AGAINST TRANSFER. YOU may not sublicense, assign, share, sell, rent, lease, or otherwise transfer YOUR individual right to use the LICENSED MATERIALS.

5. RESTRICTION AGAINST COPYING OR MODIFYING LICENSED MATERIALS. The LICENSED MATERIALS are proprietary to and copyrighted by Bootix and its Affiliates and/or its/their software suppliers. Except as expressly permitted in this AGREEMENT, YOU may not copy or otherwise reproduce the LICENSED MATERIALS. In no event does the limited copying or reproduction permitted under this AGREEMENT include the right to decompile, disassemble, electronically transfer, or reverse engineer the licensed Software, or to translate the Licensed Software into another computer language.

6. PROTECTION AND SECURITY. YOU agree to use YOUR best efforts and take all reasonable steps to safeguard the LICENSED MATERIALS to ensure that no unauthorized personnel shall have access thereto and that no unauthorized copy, publication, disclosure, or distribution, in whole or in part, in any form shall be made, and YOU agree to notify Bootix of any unauthorized use thereof. You acknowledge that the LICENSED MATERIALS contain valuable confidential information and trade secrets, and that unauthorized use, copying and/or disclosure thereof are harmful to Bootix or its Affiliates and/or its/their software suppliers. YOU agree that in the event of a breach of this Agreement, Bootix shall be entitled in monetary damages and its reasonable attorneys' fees and costs in enforcing this Agreement, and injunctive relief to restrain such breach.

7. ESPECIALLY FOR THE UNITED STATES OF AMERICA GOVERNMENT RESTRICTED RIGHTS. The enclosed Product (a) was developed solely at private expense; (b) contains "restricted computer software" submitted with restricted rights in accordance with section 52.227-19 (a) through (d) of the commercial Computer Software-Restricted Rights Clause and its successors, and (e) in all respects is proprietary data belonging to bootix and/or its suppliers. For Department of Defense units, the Product is licensed with the "Restricted Rights" as defined in the DoD Supplement to the Federal Acquisition Regulations, Section 52.227-7013(e)(1)(b) and its successors, and use, duplication, or disclosure by the Government is subject to restrictions as set forth in subparagraph (c)(1)(ii) of the Rights in Technical Data and Computer Software clause at 252.227-7013, bootix Technology GmbH, Geranienstr. 19, 41466 NEUSS Germany.

8. LIMITED WARRANTY AND LIMITATION OF LIABILITY. The only warranty Bootix makes to YOU in connection with this license of the LICENSED MATERIALS is that the media, in any, on which the Licensed Software is recorded will be replaced without charge, if in good faith determines that the media and proof of payment of the license fee are returned to Bootix or the dealer from whom it was obtained within ninety (90) days of the date of payment of the license fee.

NEITHER BOOTIX NOR ITS AFFILIATES MAKES ANY OTHER WARRANTY OR REPRESENTATION, EXPRESS OR IMPLIED, WITH RESPECT TO THE LICENSED SOFTWARE, AND IT IS LICENSED "AS IS". THE WARRANTY AND REMEDY PROVIDED ABOVE ARE EXCLUSIVE AND IN LIEU OF ALL OTHER WARRANTIES, INCLUDING IMPLIED WARRANTIES OF MERCHANTABILITY OR FITNESS FOR A PARTICULAR PURPOSE WHICH ARE EXPRESSLY DISCLAIMED, AND STATEMENTS OR REPRESENTATIONS MADE BY ANY OTHER PERSON OR FORM ARE VOID. ONLY TO THE EXTENT SUCH EXCLUSION OF IMPLIED WARRANTY(IES) IS NOT PERMITTED BY LAW, THE DURATION OF ANY IMPLIED WARRANTY(IES) IS LIMITED TO THE DURATION OF THE WARRANTY SET FORTH ABOVE. YOU ASSUME ALL RISK AS TO THE QUALITY, FUNCTION, AND PERFORMANCE OF THE LICENSED MATERIALS. IN NO EVENT WILL BOOTIX OR ANY OTHER PARTY WHO HAS BEEN INVOLVED IN THE CREATION, PRODUCTION, OR DELIVERY OF THE LICENSED MATERIALS BE LIABLE FOR SPECIAL, DIRECT, INDIRECT, INCIDENTAL, OR CONSEQUENTIAL DAMAGES, INCLUDING LOSS OF DATA OR PROFITS OR FOR INABILITY TO USE THE LICENSED MATERIALS, TO ANY PARTY EVEN IF BOOTIX OR SUCH OTHER PARTY HAS BEEN ADVISED OF THE POSSIBILITY OF SUCH DAMAGES. IN NO EVENT SHALL BOOTIX OR SUCH OTHER PARTY'S LIABILITY FOR ANY DAMAGES OR LOSS TO YOU OR ANY OTHER PARTY EXCEED THE LICENSE FEE YOU PAID FOR THE LICENSED MATERIALS.

YOU agree that this Agreement shall not be subject to the United Nations Convention on the International Sale of Goods (UNCISG).

9. VIRUS CHECKING. Bootix has tested its software with current virus checking technologies. However, because no anti-virus system is 100% reliable, we strongly caution YOU to write protect and then verify that the Software, prior to installation, is virus-free with an anti-virus system in which YOU have confidence.

10. GENERAL. If any provision of this Agreement is determined to be invalid or unenforceable under any applicable law, it shall be deemed omitted and the remaining provision shall continue in full force and effect. Bootix waives of any right shall not constitute waiver of that right in the future. This Agreement is to be governed by and constructed in accordance with German laws, court shall be the one where the headquarters of Bootix are located. Any notice to be sent to Bootix must be mailed by certified mail to the following address:

Bootix Technology GmbH, Neutorstrasse 31, D-61250 Usingen/Germany - Attn: Manager, Legal Contracts

This Agreement constitutes the entire understanding between the parties with respect to the subject matter hereof, and all prior written agreements, representations, statements, and undertakings, oral or written, are hereby expressly superseded and canceled.

12 Appendix A: Document Revision History

Revision	Date	Edited by	Changes
100	11.May.2011	WAS/MEG	Converted to Kontron CI from DLAG V2.0 including title photo. Updated BIOS. Minor corrections.

13 Index

A

Assembly Options..... 13

B

BIOS History 41

BIOS Setup 33, 42

Block Diagram 14

Boot from LAN 43

Boot Up the OS 33

C

Class A 11

Class B 11

Connectors 22

Copyright 5

Core BIOS 41

Corporate Offices 55

D

Declaration of Conformity 9

Differences between the MPC20/MPC21/MPC21C.... 13

Dimensions and Diagrams

 Front 34

 Front Plate MPC21 38

 Mounting Plate 39

 Rear 35

 Side..... 37

 Top..... 36

 Wall Mounting Kit..... 40

Document Revision History 52

Documentation..... 5, 14

Driver Installation 33

E

ELinOS Demo..... 33

EMV Certificate 10

EMV Test Diagram 11

Environmental Protection..... 6

F

Free DOS..... 33

Functions 22

G

Ground Potential 19

H

Hard Disk 2.5" 27

Hardware Installation..... 29

I

Incompatibilities 17

IT-Power System..... 27

J

Jumper J2..... 32

M

Manuals 30

O

Operator Security 21

Output Currents 18

Over-Heating..... 20

P

Packing List..... 12

Peripherals 31

Power 32

Power Consumption 16

Power Input Specifications	27
Power Supply Connector	26
Power Switch	19
Prepare the System.....	30
PXE	43
PXE Boot	43, 48
PXE License.....	49
PXE Setup.....	43, 47

R

RoHS.....	6
-----------	---

S

Safety Regulations	18
Security	17
SLAX LINUX.....	33
Specifications	
Chipset	15
CPU	15
EMI / EMC Tests.....	17
External Interfaces	15
Memory.....	15
Operating Environment	17
Operating Temperature	16

Physical Characteristics	16
Power Management	16
Power Supply.....	16
Video Controller	15
SQS	8
Standards	5
Swiss Association for Quality and Management Systems.....	8
Swiss Quality	7
System Overview	12

T

Technical Support.....	6
Trademarks	5

W

Wake On LAN	43
Warranty	5
WEEE	7
WLAN Option	28
WOL.....	43

Corporate Offices

Europe, Middle East & Africa

Kontron AG
Oskar-von-Miller-Strasse 1
85386 Eching/Munich
Germany
Tel.: +49 (0)8165/ 77 777
Fax: +49 (0)8165/ 77 219
info@kontron.com

Switzerland

Kontron Compact Computers AG
Nordstrasse 11/F
CH – 4542 Luterbach
Switzerland
Tel.: +41 (0)32 681 58 00
Fax: +41 (0)32 681 58 01
infokcc@kontron.com

